

# From the industry for the industry

To every geologist, rock enthusiast & explorer

Made possible by

Gold sponsors



**SveMin**



Silver sponsors



**KATI**



**MSALABS**



**BOLIDEN**



**NORSE™**  
DIAMOND DRILLING

Bronze sponsors



**Xploration**  
PRODUCTS



**GeoVista**

**radai**

**SGU** Sveriges  
geologiska  
undersökning

**LOVISAGRUVAN**

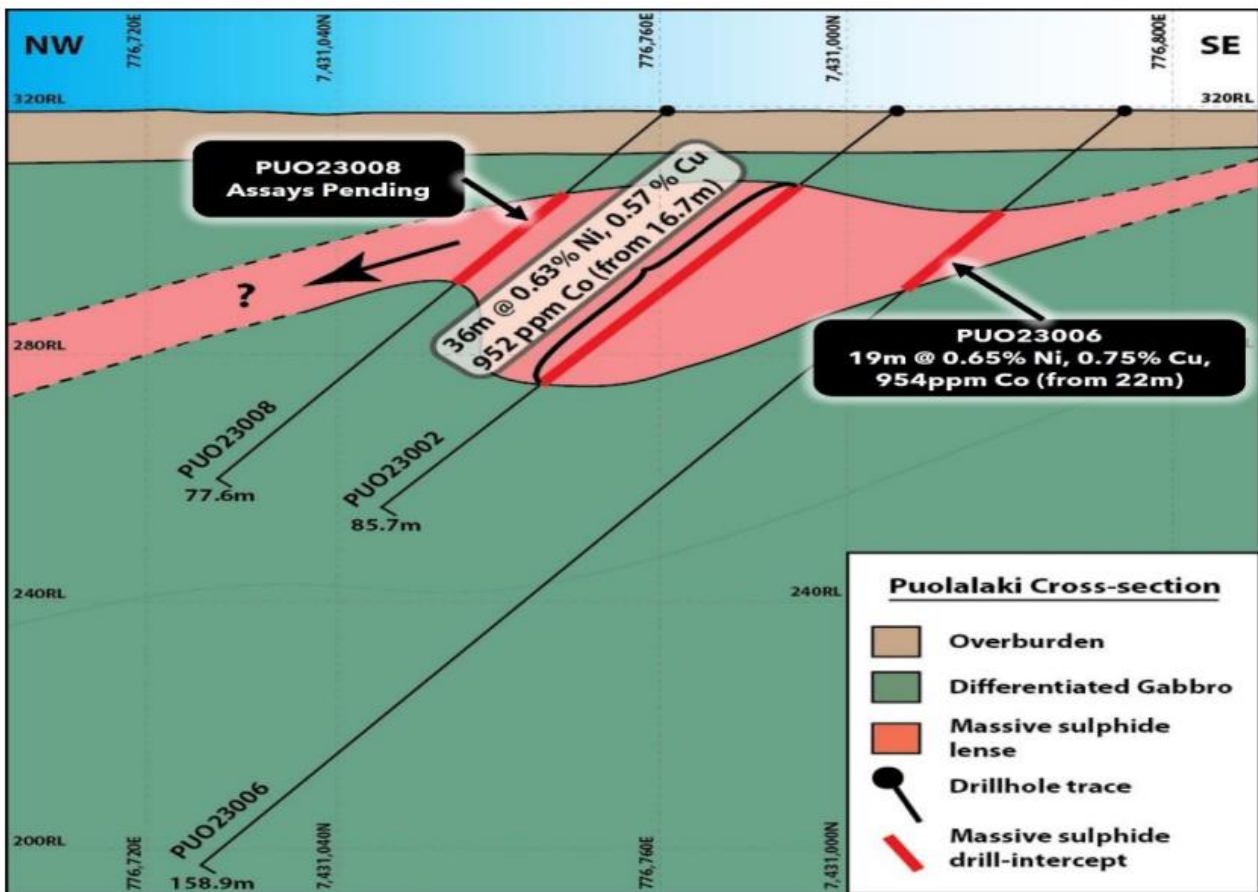


**Theia X**

## Industry News

**Avira Resources** reported initial assay results from phase two drilling at the Puolalaki Ni-Cu-Co-Au project in northern Sweden. Following up on the massive sulfide discovery from April 2023, drill hole PUO23006 intersected **19m @ 0.65% Ni, 0.75% Cu, 954ppm Co** from only 22m. Additionally, lower grade, disseminated mineralization was intercepted underneath the massive sulfide intercept from 55m, returning **44m @ 0.17% Ni, 0.16% Cu, 263ppm Co, including 11m @ 0.26% Ni, 0.19% Cu, 486ppm Co**.

The drilling program, totaling five diamond holes for 735m, has now been completed with further assay and DHEM results currently pending.



Cross-section through the massive sulfide mineralization at Puolalaki with initial assay results (Source: [www.aviraresources.com.au](http://www.aviraresources.com.au))

## Industry News

**Prospech Limited** announced the commencement of drilling at the Korsnäs historical tailings storage facility. The planned 50-hole campaign aims to assess the REE potential of the historic tailings storage facility and is scheduled to be completed by the end of February.

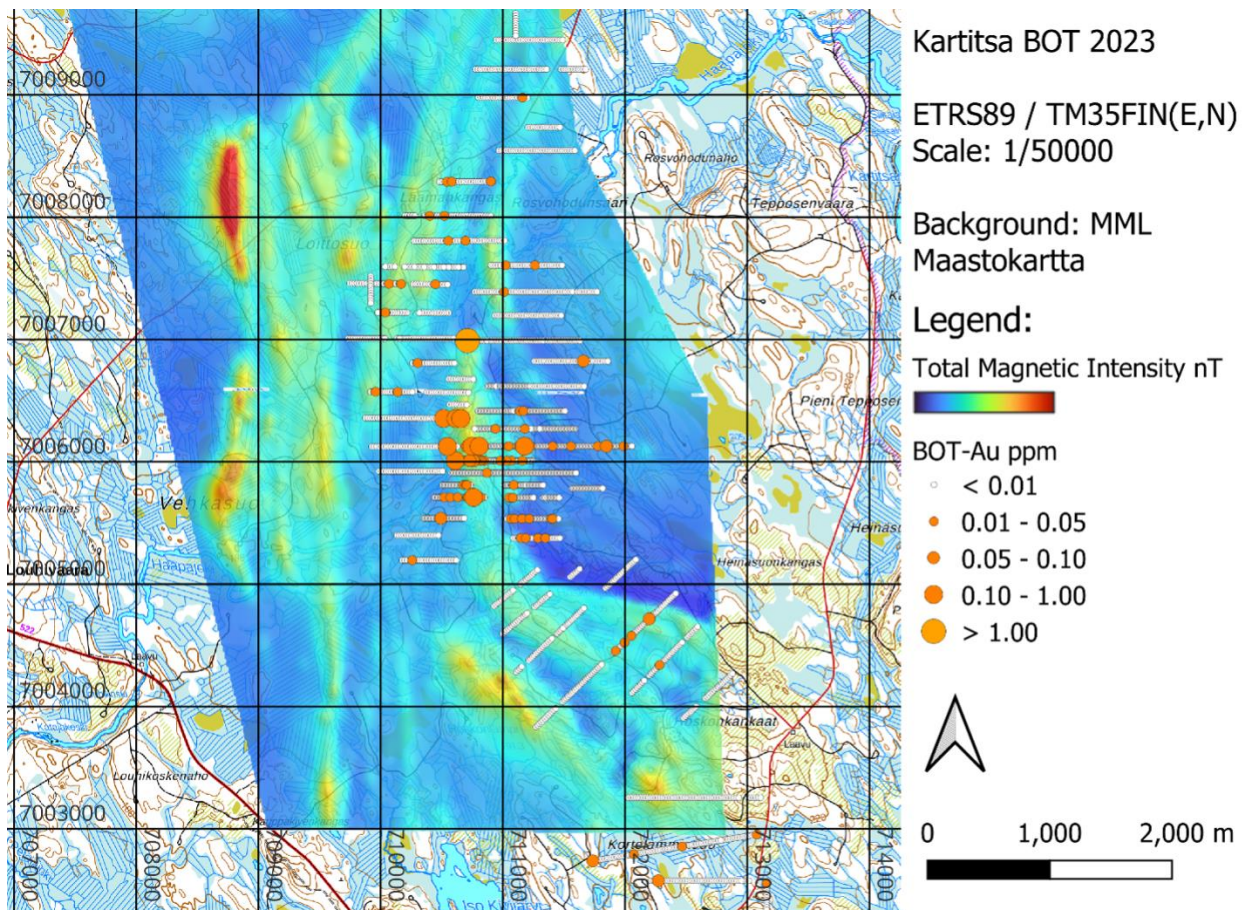


Drilling at the Korsnäs historic tailings storage facility (Source: [www.prospech.com.au](http://www.prospech.com.au))

# Industry News

**Endomines** published a new inferred mineral resource estimate for its Kuittila gold project, amounting to 814.7Kt @ 1.88g/t Au for a total of 49 170 oz of gold. Drill testing of the deep extensions of the mineralized system started at the end of January and is expected to run for two months.

The company further reported the definition of a significant base of till gold and pathfinder anomaly at the Kartitsa project, where an approx. 2 km long and 500m wide anomalous area has been identified.

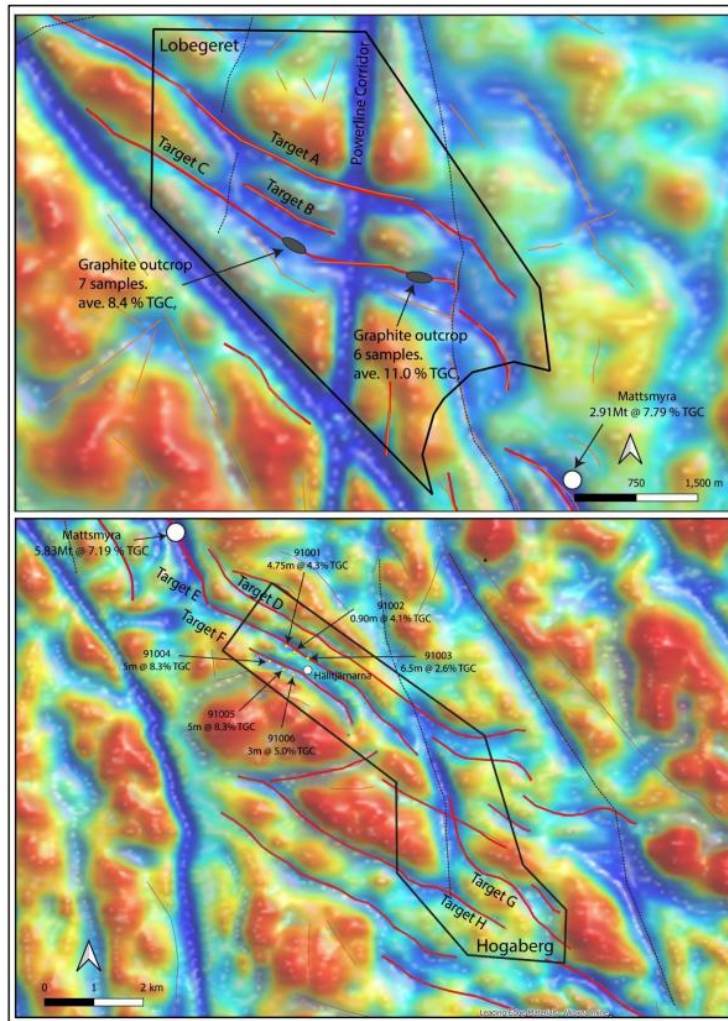


Base of till anomalies plotted on top of UAV magnetics (Source: [www.endomines.com](http://www.endomines.com))

# Industry News

**Western Gold Resources** announced the identification of 8 graphite targets at its Loberget and Hogaberg graphite projects, north of the Woxna graphite mine in central Sweden. Compilation and interpretation of existing geophysical datasets by Geovista resulted in the identification of three NW-striking conductors for a combined strike length of 11.5km at Loberget and five conductors with a combined strike length of 19.3km at Hogaberg.

Following, the company plans to investigate the anomalies through new geophysical surveys over priority targets as well as additional field work and trenching.



Geophysical targets at the Loberget and Hogaberg projects (Source: [www.westerngoldresources.com](http://www.westerngoldresources.com))

## Industry News

**Metals One** reported assay results from a 1551m, eight-hole diamond drilling program at its black schist project in Finland. Mineralized black schists were intersected in all holes, grading e.g. 14.7m @ 0.18%Ni, 0.1% Cu, 0.01%Co & 0.57% Zn in drill hole RAU0002.

Drilling further confirmed the synformal nature of the mineralized layers, prompting the company to extend its permit area in the region.

Hole	From, m	To, m	Int, m	Co%	Cu%	Ni%	Zn%	Cutoff %
RAU0001	106.50	122.00	15.50	0.01	0.09	0.13	0.36	0.1% Ni
RAU0002	50.00	64.70	14.70	0.01	0.11	0.18	0.57	0.1% Ni
RAU0003	199.50	210.50	11.00	0.01	0.10	0.22	0.55	0.1% Ni
RAU0004	129.13	136.10	6.97	0.01	0.09	0.16	0.42	0.1% Ni
RAU0005	144.30	148.00	3.70	0.01	0.08	0.13	0.40	0.1% Ni
RAU0005	156.76	159.50	2.74	0.01	0.06	0.13	0.25	0.1% Ni
RAU0006	120.00	122.20	2.20	0.01	0.04	0.13	0.03	0.1% Ni
RAU0006	148.60	151.70	3.10	0.01	0.00	0.18	0.05	0.1% Ni
RAU0008	108.86	115.50	6.64	0.01	0.07	0.16	0.24	0.1% Ni

Significant drill intersections (Source: [www.metals-one.com](http://www.metals-one.com))

On a further note, **United Lithium** announced the appointment of Mr. Henrik Lundin to its board of directors, **Gold Line Resources** announced that its shareholders approved the proposed merger with Barsele Minerals, **European Energy Metals** advised it was granted two new exploration licenses in central Finland, **Bluejay Mining** reported on significant cost reductions and leadership adjustments and **Anglo American** and Finnish Minerals Group signed an MoU to explore battery value chain opportunities.