

# From the industry for the industry

To every geologist, rock enthusiast & explorer

Made possible by

Gold sponsors



SveMin



Silver sponsors



KATI



MSALABS



BOLIDEN



NORSE™  
DIAMOND DRILLING

Bronze sponsors



Xploration  
PRODUCTS



GeoVista

radai

SGU Sveriges  
geologiska  
undersökning

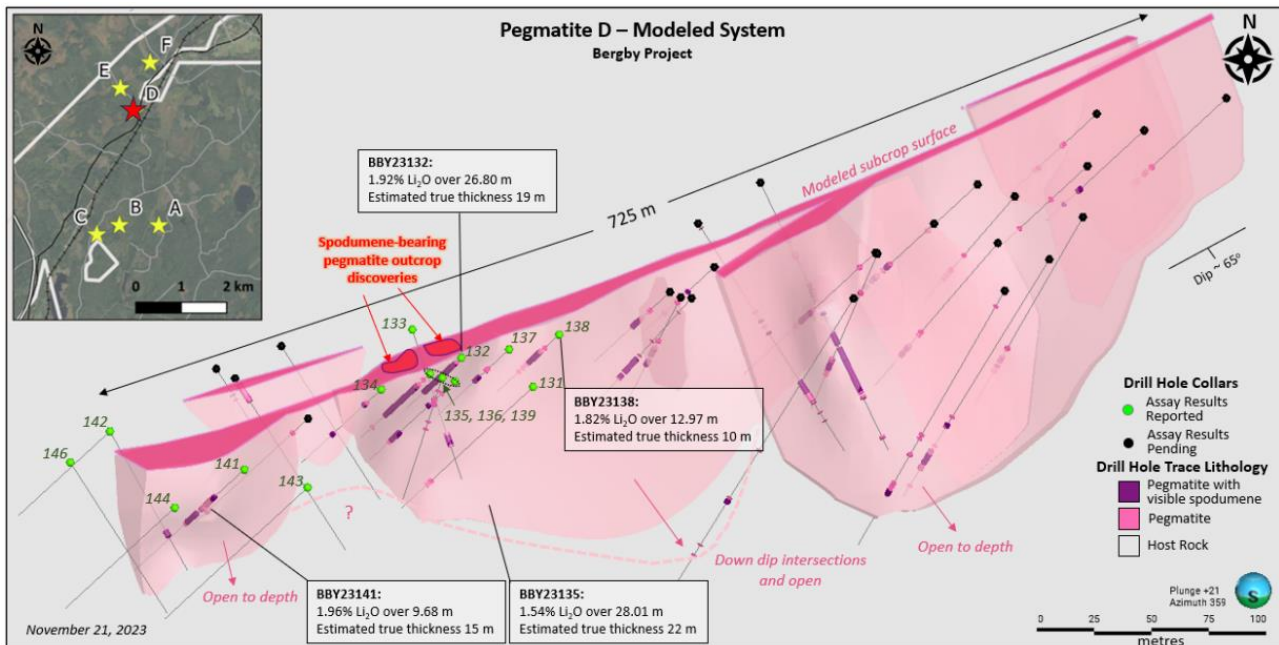
LOVISAGRUVAN



Theia X

# Industry News

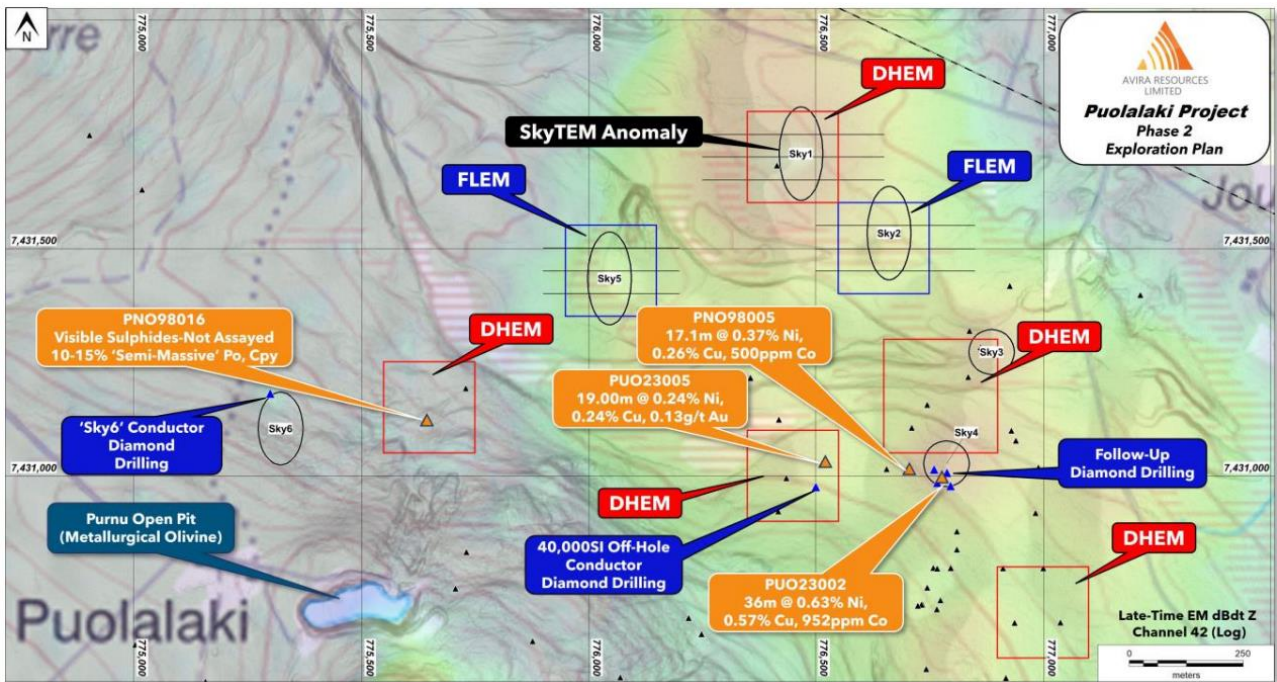
**United Lithium** announced the discovery of new spodumene-bearing pegmatites at its Bergby project in central Sweden. As part of an ongoing, expanded, 6000m drill program, the company is currently drill testing newly discovered pegmatites D and E, with assay results from Pegmatite D returning e.g. 1.92%  $Li_2O$  over 26.80m (from 3.60m down hole) in drill hole BBY23132 or 1.54%  $Li_2O$  over 28.01m (from 9.12m down hole) in drill hole BBY23135. An additional pegmatite discovery (F) is yet to be drill-tested.



Bergby Pegmatite D system with drill hole locations and highlighted assay results (Source: [www.unitedlithium.com](http://www.unitedlithium.com))

# Industry News

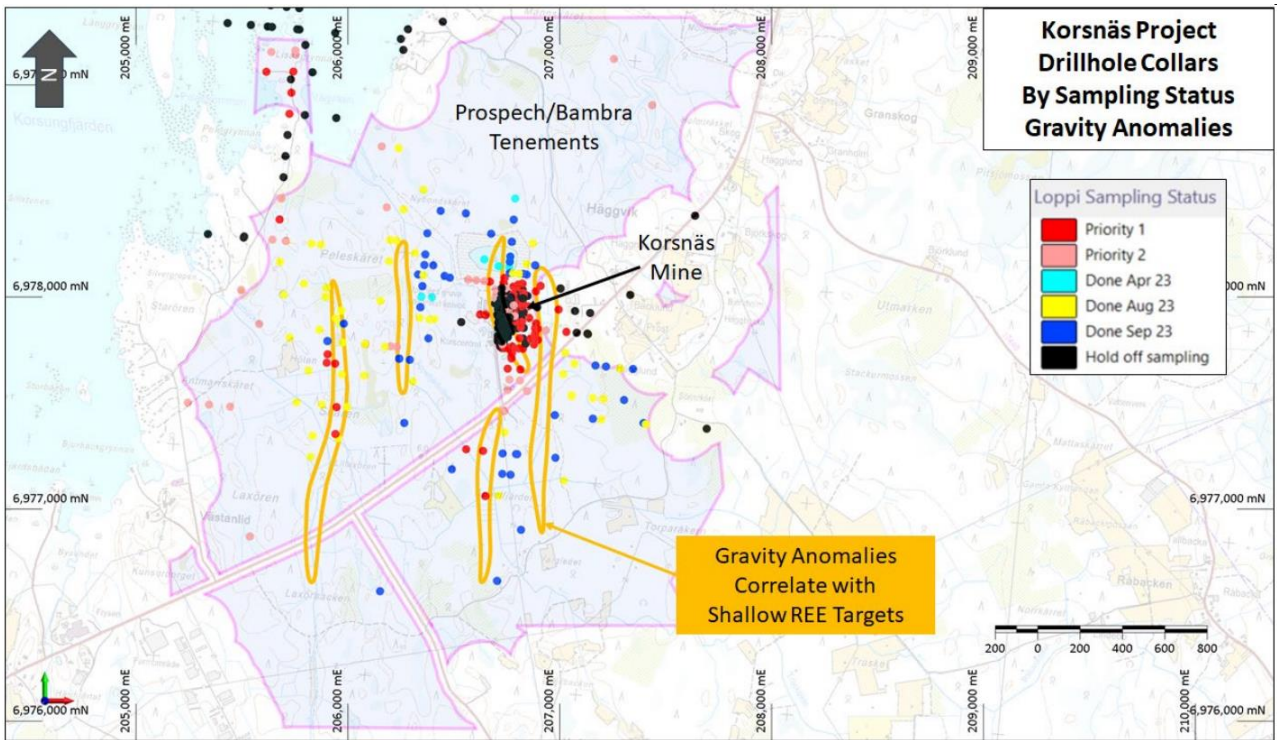
**Avira Resources** announced a phase two diamond drilling program at the Puolalaki Ni-Cu-Co-Au project to commence in early December. As part of the planned, 6-hole, 805m program, the company aims to infill around recent massive sulfide intercepts (e.g. 36m @ 0.63% Ni, 0.57% Cu, 952ppm Co in PUO23002), test an off hole conductor from recent drilling as well as a SkyTEM conductor north of the historic Purnu open pit mine. The drilling program is scheduled to take approx. two weeks with initial assays expected in January.



Puolalaki phase two exploration overview map (Source: [www.aviraresourcesltd.com.au](http://www.aviraresourcesltd.com.au))

# Industry News

**Prospech Limited** provided a comprehensive update on its Korsnäs REE project. Assessment of a large amount of data associated with the historic Korsnäs lead mine resulted in the recognition of the projects, previously overlooked, REE potential. Resampling of historic drill core resulted in locally thick and high-grade intersections of REE mineralization, e.g., 27.6m @ 19,744ppm TREO, with a large amount of assay data still pending. The company notes that the amount and quality of the historic drill data should provide a solid foundation for a JORC resource estimation with only a limited number of twin or infill drill holes needed.



Korsnäs project exploration map highlighting five negative gravity anomalies that correlate with shallow REE mineralization (Source: [www.prospech.com.au](http://www.prospech.com.au))

On a further note, **Mahive Minerals** reported assay results from its maiden spring 2023 drilling campaign at the Mo I Rana project, **Archelon Natural Resources** entered into an agreement to acquire all shares of Arc Gladhammar K AB, **Endomines** announced the renewal of a sales agreement with Boliden Commercial AB and **Talga Group** announced it secured a 31 million AUD environmental bond facility for its Vittangi Anode project.