

# From the industry for the industry

To every geologist, rock enthusiast & explorer

Made possible by

Gold sponsors



SveMin



Silver sponsors



KATI



MSALABS



BOLIDEN



NORSE™  
DIAMOND DRILLING

Bronze sponsors



Xploration  
P R O D U C T S



GeoVista

radai

SGU Sveriges  
geologiska  
undersökning

LOVISAGRUVAN

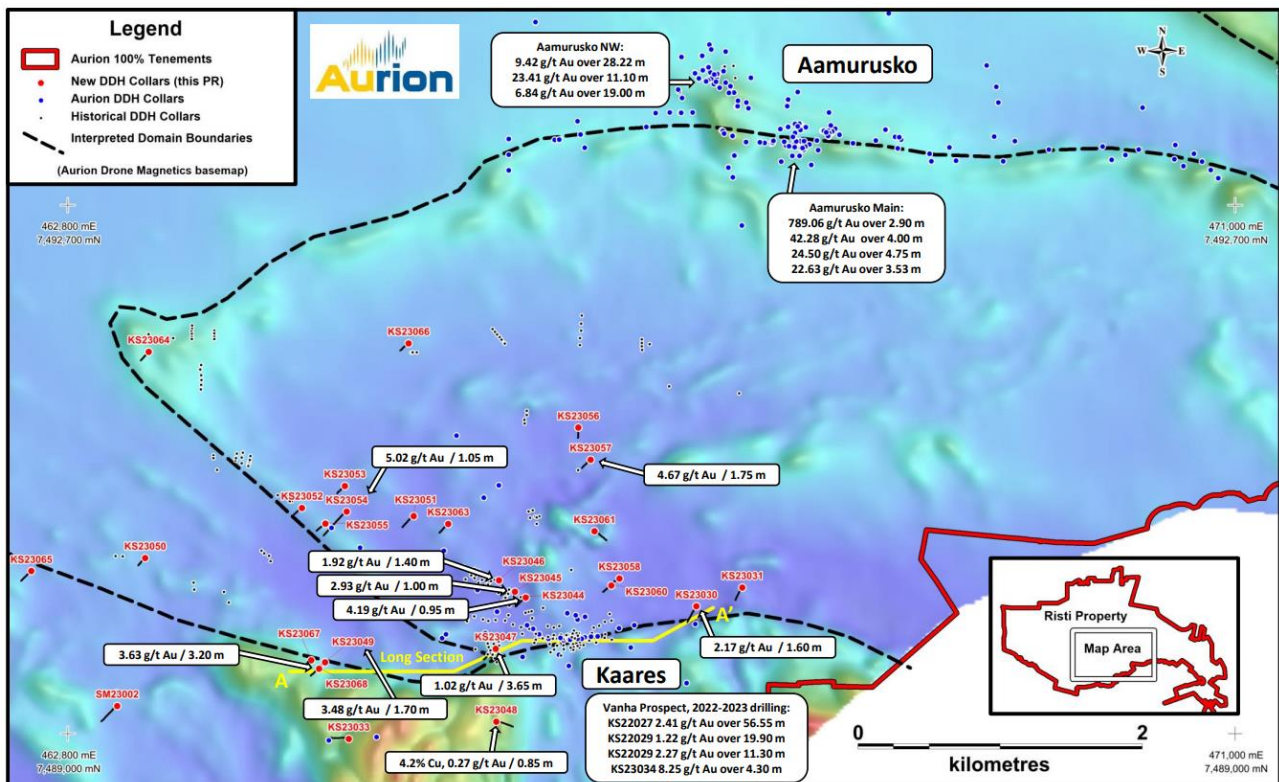


Theia X

# Industry News

**Aurion Resources** reported the intersection of four new gold occurrences on its wholly owned Risti project. Targeting geochemical and geophysical anomalies, a 36-hole scout drilling program resulted in the identification of mineralization further to the west of the Vanha prospect (3.63g/t Au over 3.2m) as well as in new intersections along NW trending structures up to 1.2km to the north of the Vanha prospect, (4.67g/t Au over 1.75m).

Gold mineralization and favorable host rocks were further intersected in the Risti area, approximately 1km SE of the Ikkari discovery.

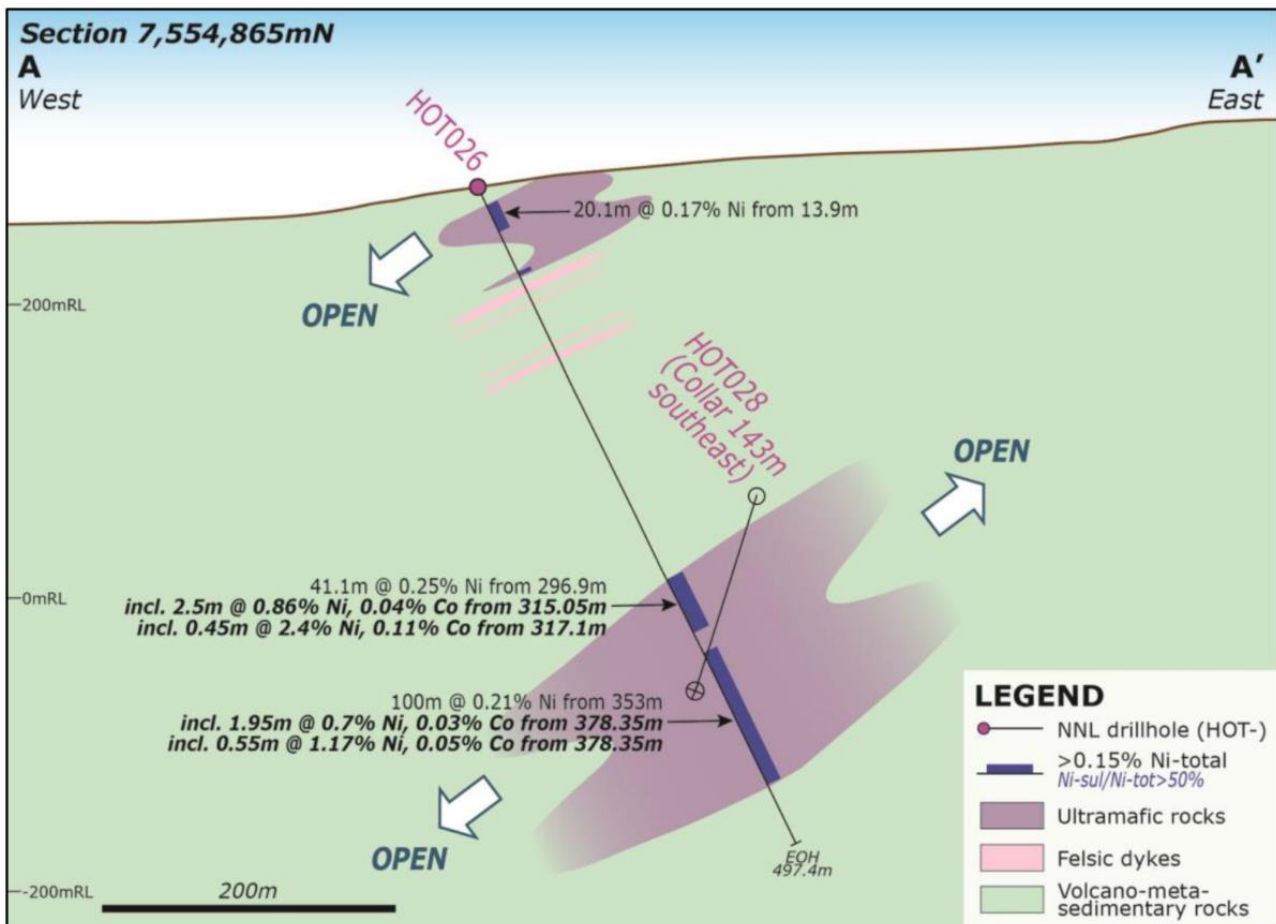


Kaares-Aamurusku area with scout drill holes and highlighted intersections (Source: [www.aurionresources.com](http://www.aurionresources.com))

# Industry News

**Nordic Nickel** reported assay results from additional nine diamond drill holes from recent drilling at its Pulju project, returning e.g. 41.1m @ 0.25% Ni, including 0.45m @ 2.4% Ni, 0.11% Co and 100m @ 0.21% Ni, including 0.55m @ 1.17% Ni and 0.05% Co in drill hole HOT026.

The company notes that assay results for an additional five drill holes are currently pending, and the updated mineral resource estimate is scheduled for completion by the end of the year.



Cross section through drill hole HOT026 with highlighted assay results (Source: [www.nordicnickel.com](http://www.nordicnickel.com))

## Industry News

**Nordic Iron Ore** reported on additional REE assay results of historic drill core from its Blötberget Iron deposit. New results returned up to 15285ppm TREO in the footwall of the ore body and 876ppm TREO in the main ore body from 548-566m. The company plans to further investigate the size and scale of the REE mineralization to assess the potential of producing a phosphorus and rare earth element by-product to its high-grade iron ore concentrate.



On a further note, **Capella Minerals** provided a financing update, **Greenland Resources** provided a progress update on its Malmbjerg Molybdenum project, **Copperstone Resources** has been approved for listing on the Nasdaq Stockholm Main Market, and **Bluelake Mineral** provided a status update for its Joma project