

# From the industry for the industry

To every geologist, rock enthusiast & explorer

Made possible by

Gold sponsors



**SveMin**



Silver sponsors



**KATI**



**MSALABS**



**BOLIDEN**



**NORSE™**  
DIAMOND DRILLING

Bronze sponsors



**Xploration**  
PRODUCTS



**GeoVista**

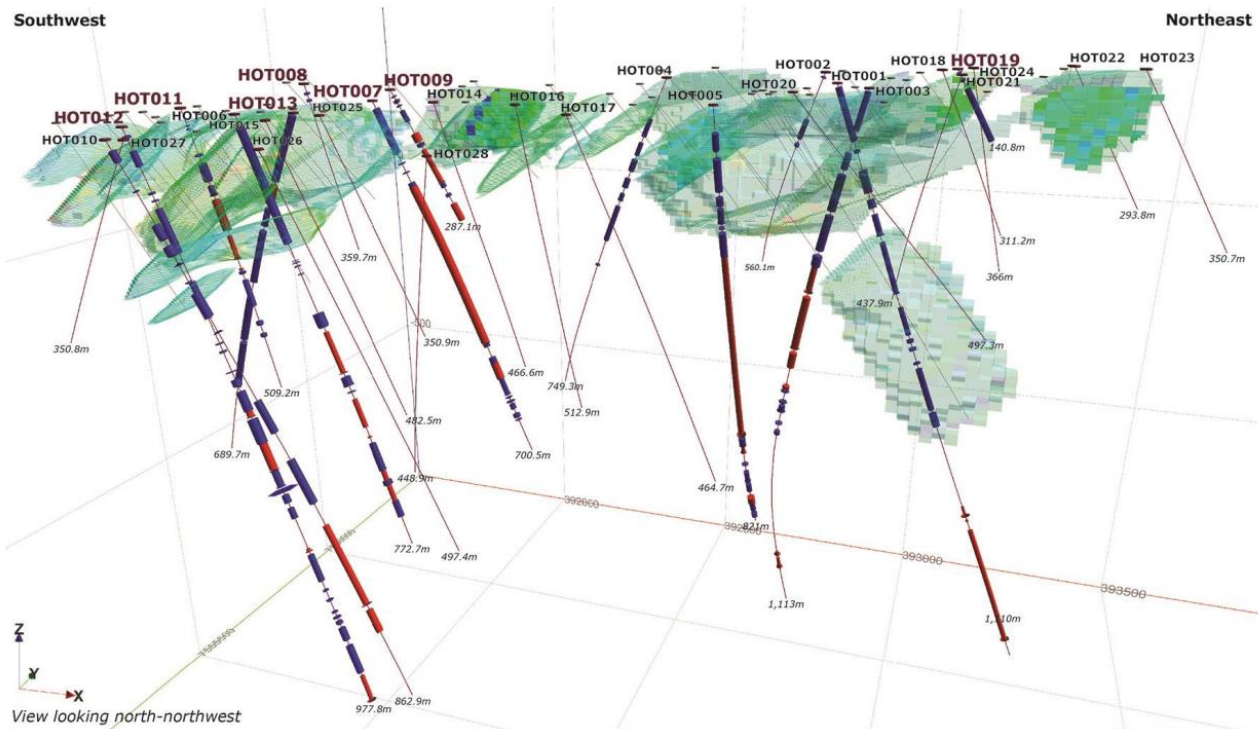
**radai**

**SGU** Sveriges  
geologiska  
undersökning

**LOVISAGRUVAN**

# Industry News

**Nordic Nickel** reported assays from seven additional drill holes from its phase 1 drilling program at the Hotinvaara project. Highlighted results include e.g., 117.9m @ 0.22% Ni from 4.1m in drill hole HOT013, or 103.2m @ 0.19% Ni from 37.55m in HOT019. According to the company partial leach assaying confirms the predominance of nickel sulfide in the assays received to date. The company is currently working on an update for the Hotinvaara mineral resource, which to date stands at 133.6Mt @ 0.21%Ni, 0.01% Co. Assay results for an additional 14 holes are pending.

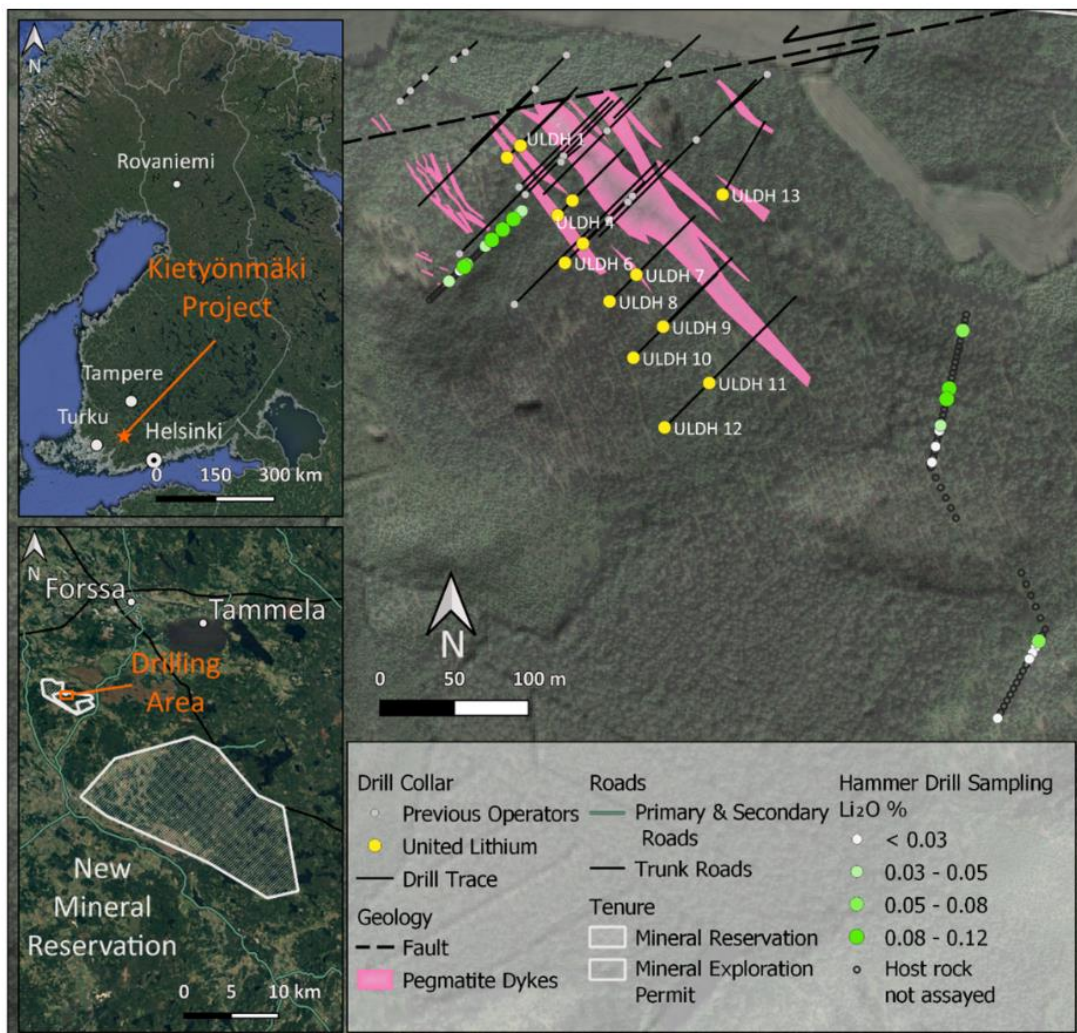


“3D oblique view (looking north-northwest) highlighting Nordic’s drilling (purple traces) and historical drilling (dark grey traces) overlain on Hotinvaara Mineral Resource block model. Drillholes discussed in this release highlighted by purple text. Weighted average composite nickel intersections (see Appendix 1) highlighted by blue (Ni-sulphide/Ni-total>50%) and red cylinders (Ni-sulphide/Ni-total1500ppm Ni-total with max. 6m internal dilution.” (Source: [www.nordicnickel.com](http://www.nordicnickel.com))



# Industry News

**United Lithium** published assay results from a recent drill program at its Kietyönmäki Li project in southern Finland. Drilling was successful in confirming the lithium mineralized main dyke to be more than 200m long, up to 25m wide, and at least 160m deep, with the system remaining open along strike to the southeast and at depth. Highlighted intersections include 1.52%  $\text{Li}_2\text{O}$  over 25.95m in drill hole ULDH-3 and 1.45%  $\text{Li}_2\text{O}$  over 29.50m in drill hole ULDH-4. Notably, additional percussion drilling and boulder sampling results indicate further extensions of the mineralization to the southeast. The company is currently designing an exploration program to follow up on these results in 2024.



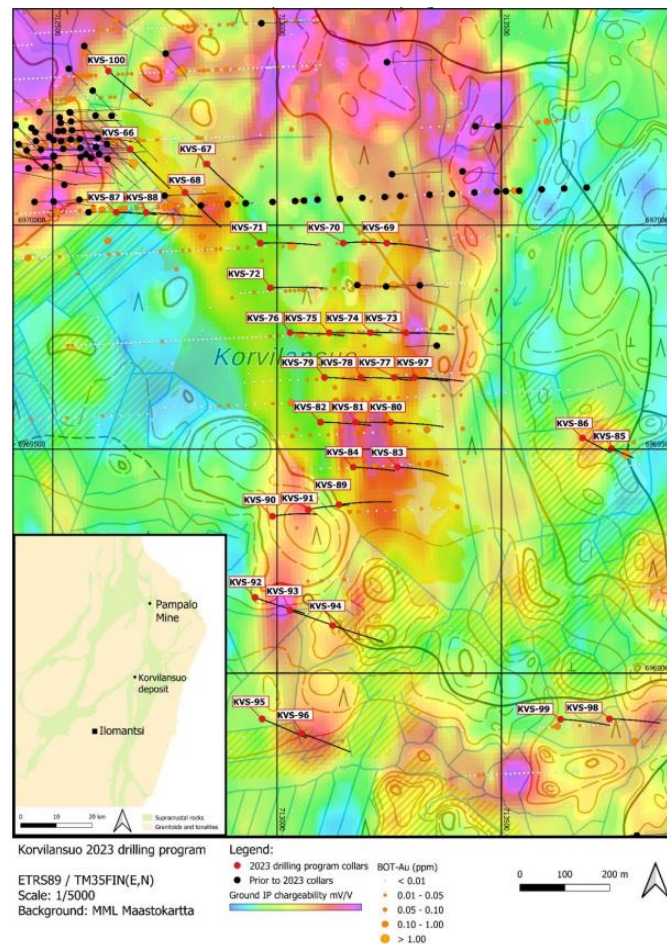
“Kietyönmäki Project location and location of drill holes completed to date.” (Source: [www.unitedlithium.com](http://www.unitedlithium.com))

This letter/article reflects the personal views and opinion of Vision Media Scandinavia AB and none of its content should be considered investment advice. While the information presented in this letter/article is believed to be accurate and reliable, it is not guaranteed by any means to be so. The presented information may be incomplete or out of date. No legal responsibility or obligation is taken to provide future updates. Neither Vision Media Scandinavia AB, nor anyone else, accepts any responsibility, or assumes any liability, for any direct, indirect or consequential loss arising from the use of the information in this letter/article.

# Industry News

**Endomines** reported assay results from recent exploration drilling at its Korvilansuo and Kuittila projects along the Karelian gold line. Highlighted assay results at Korvilansuo include e.g. 15.2m @ 3.4g/t Au, including 1.1m @ 19.2g/t Au, and 1.0m @ 15.4g/t Au in drill hole KVS-66 and 3.8m @ 8.4g/t Au, including 1.1m @ 20g/t Au in drill hole KVS-100. Notably, 31 out of 35 drill holes completed at the project in 2023 intersected gold-bearing zones above a lower cut-off grade of 0.4g/t, indicating a larger mineralized system.

Following previous high-grade gold and polymetallic intercepts at Kuittila, the newly received assay results returned e.g. 5.2m @ 8.3g/t Au and 0.02% Mo in drill hole KT-023 or 4.4m @ 2.08g/t Au, 84.75g/t Ag, 0.01% Mo, 0.67% Zn, 0.78%Pb and 0.06% Cu. Assay results for an additional 16 holes from Kuittila are currently pending.



Korvilansuo collar locations and BOT gold concentrations (Source: [www.endomines.com](http://www.endomines.com))



## Industry News

On a further note, [GreenRoc Mining](#) was granted an additional exploration license adjacent to its Amitsoq deposit, [Copperstone Resources](#) announced changes to its group management, [Capella Minerals](#) announced the sale of its central Norway copper-cobalt projects to NickelX AS, [REE Minerals](#) announced the investment of Franzefoss Minerals to develop the Fen REE field, [Ragnar Metals](#) announced the completion of the sale of its Swedish subsidiary to BHP Metals Exploration Pty Ltd and [New Peak Metals](#) announced the appointment of Mr. David Mason as interim CEO.