

From the industry for the industry

To every geologist, rock enthusiast & explorer

Made possible by

Gold sponsors



SveMin



Silver sponsors



KATI



MSALABS



BOLIDEN



NORSE™
DIAMOND DRILLING

Bronze sponsors



Xploration
P R O D U C T S



GeoVista

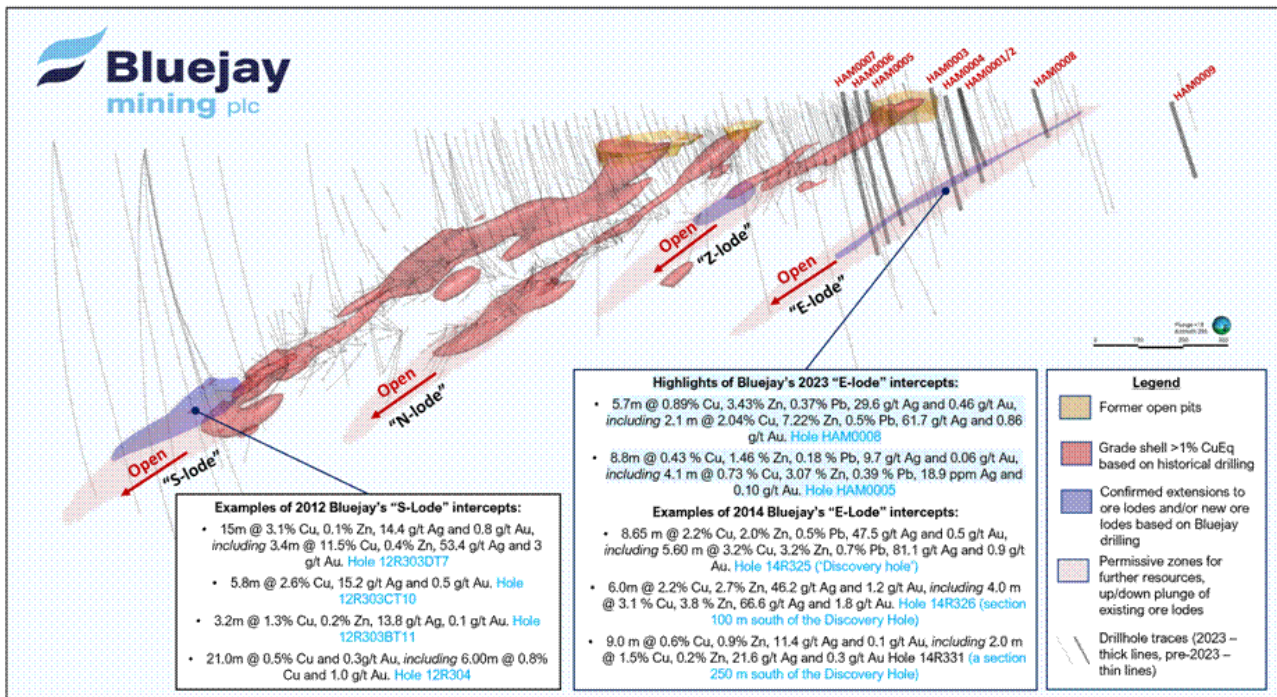
radai

SGU Sveriges
geologiska
undersökning

LOVISAGRUVAN

Industry News

Bluejay Mining reported assay results from recent drilling at its Hammaslahti Copper-Zinc-Gold-Silver project in Eastern Finland. Located up plunge from previous intersects at the E-Lode, drill hole HAM0008 returned **5.7m @ 0.89% Cu, 3.43% Zn, 0.37% Pb, 29.6 g/t Ag and 0.46g/t Au**, including **2.1m @ 2.04% Cu, 7.22% Zn, 0.5% Pb, 61.7g/t Ag and 0.86g/t Au**. The company notes that mineralization remains open up and down plunge as well as up and down dip of the E-lode, which is located approximately 200m east of the historic mine underground infrastructure. Notably, recent reinterpretation of geophysical and geological datasets defined a highly prospective area to the north of the known mineralized bodies.

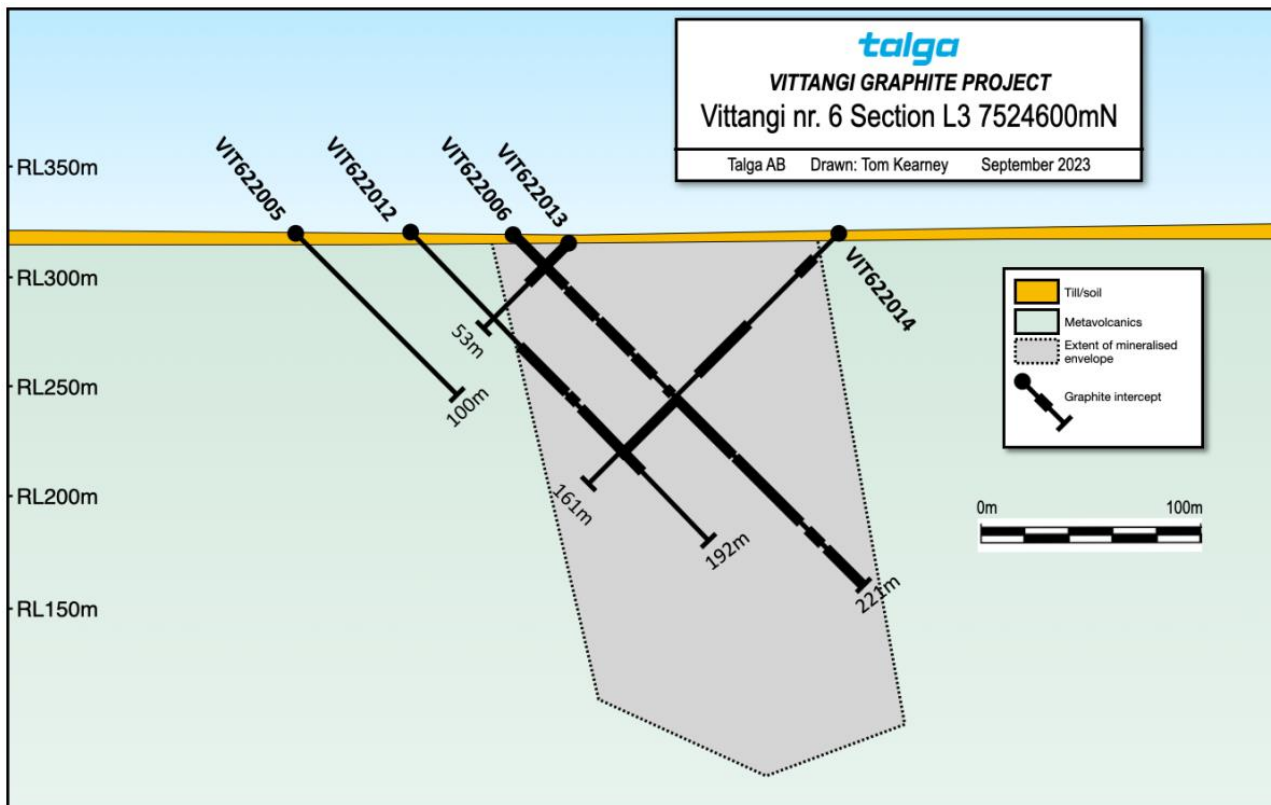


Hammaslahti ore lodes with highlighted 2023 "E-lode" intercepts (Source: www.bluejaymining.com)

Industry News

Talga Group provided an exploration update on its graphite projects in northern Sweden. At the Nunasvaara South deposit, the company recently completed a ground EM survey, aiming to delineate future drill targets to extend the existing resource at depth. Results are currently pending.

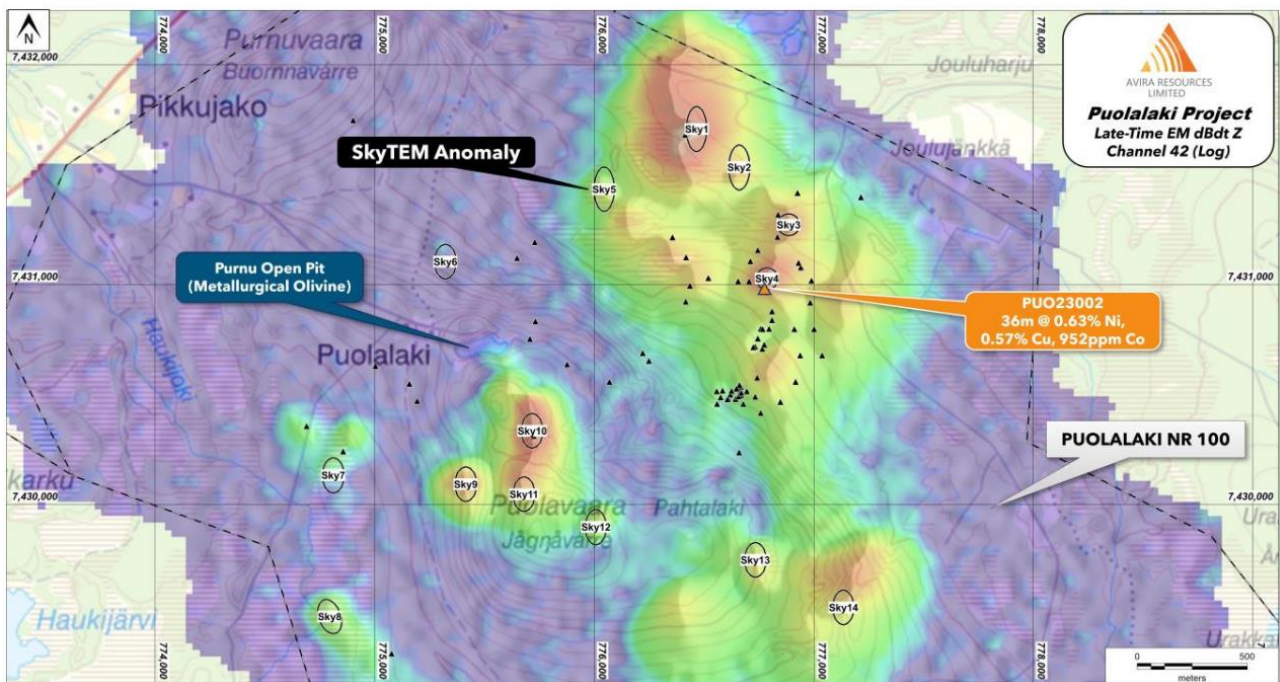
At its Vittangi nr 6 exploration permit, some 8km to the north of the Nunasvaara and Niska deposits, drilling of a strong EM conductor resulted in the discovery of a new graphite mineralization, returning e.g. 212m @ 4.5% Cg in drill hole VIT22006 or 77m @ 4.1% Cg. While the company sees potential for an increase in grade and scale of this discovery in the future, the development of Nunsavaara South and Niska remains its top priority.



Cross section along Vittangi nr 6 ground EM line 3 highlighting recent drill results (Source: www.talgagroup.com)

Industry News

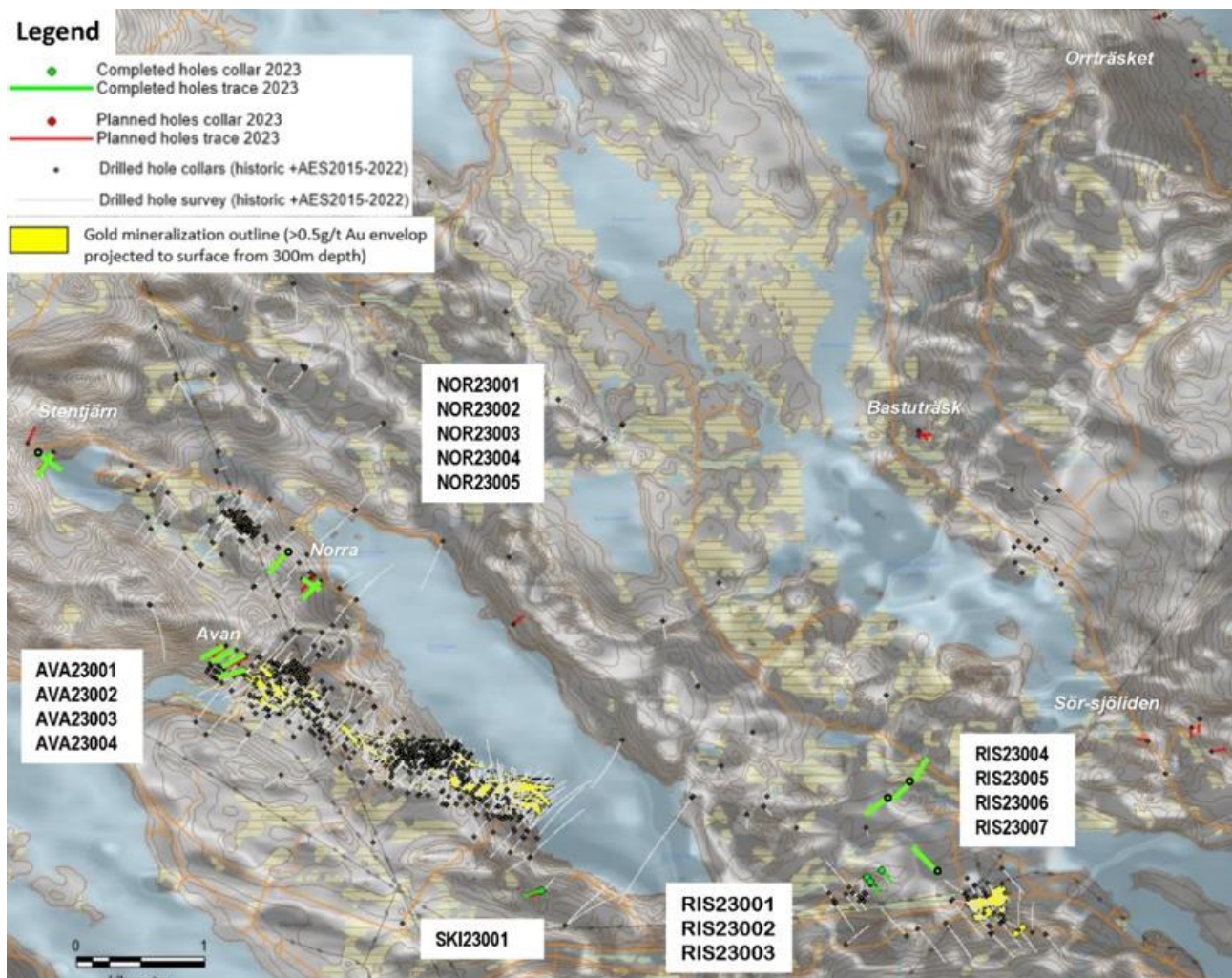
Avira Resources announced results from a recently conducted SkyTEM airborne EM survey at its Puolalaki project in northern Sweden. The survey was successful in identifying 14 EM anomalies that have been ranked based on their geophysical characteristics and geological context. The company is currently planning follow-up ground EM and BHEM surveys (using old drill holes in the vicinity of SkyTEM anomalies) to further refine the anomalies before following up with a phase 2 drilling campaign.



Map highlighting the 14 SkyTEM EM anomalies at Puolalaki (Source: www.aviraresourcesltd.com.au)

Industry News

Barsele Minerals provided a preliminary summary of drilling activities at the Barsele project. The company's 2023 diamond drilling program concluded on September 8th with a total of 17 holes drilled, testing five different target areas prospective for intrusion-hosted gold and massive sulfide mineralization. Drilling at the Risberget target identified a wide zone of strongly altered rocks with anomalous gold values, including e.g. 12m @ 0.4g/t Au, including 1.0m @ 1.24g/t Au. Four holes have been drilled at Avan to test the NW extension of the resource lodes. All holes intersected visual sulfide mineralization with visible gold encountered in drill hole AVA23001. Assay results for Avan as well as for the other targets are currently pending.

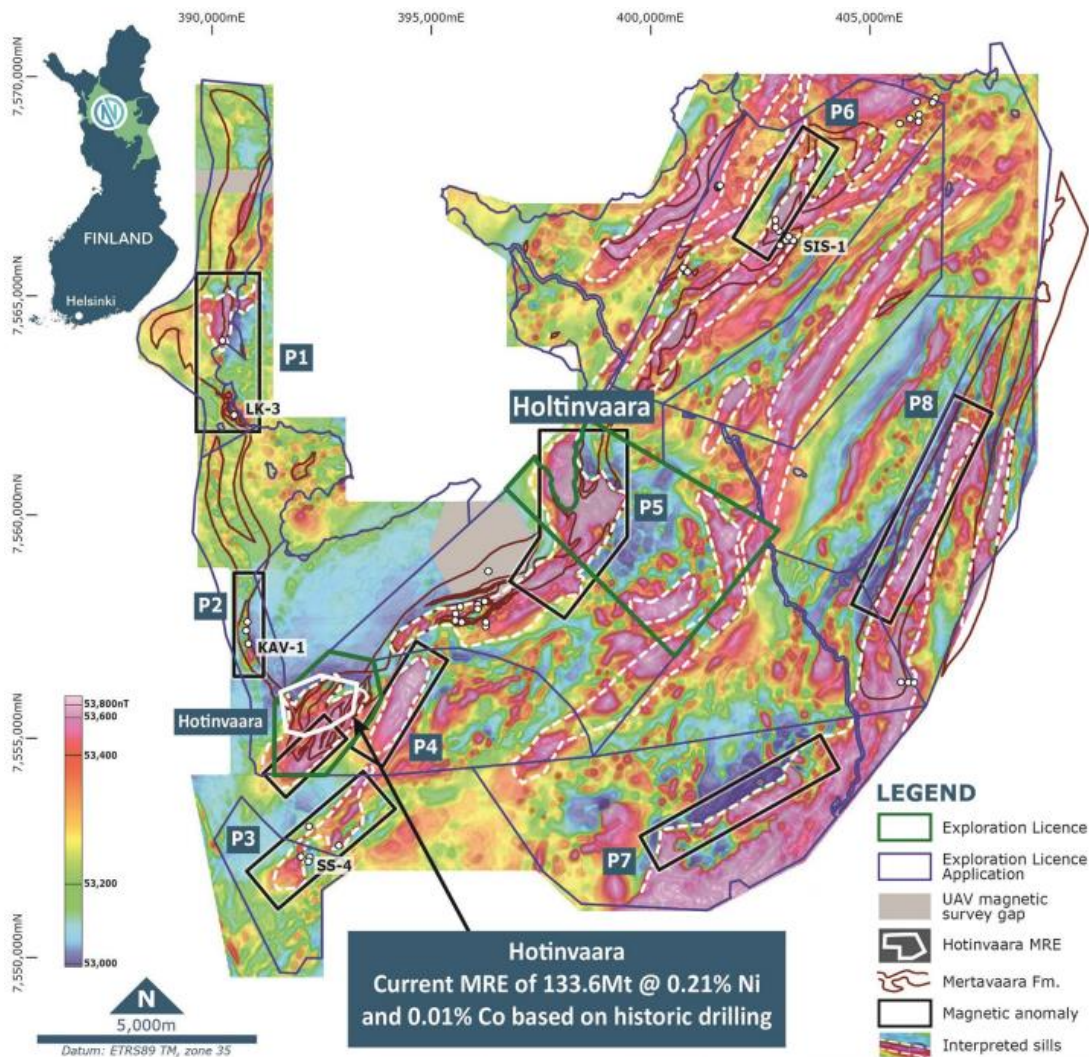


Barsele drilling targets map 2023 (Source: www.barseleminerals.com)

Industry News

Nordic Nickel advised it was granted the Holtinvaara exploration license at its Pulju project in northern Finland. The license is located approx. 5km to the NE of the Holtinvaara Mineral Resource and covers the continuation of highly prospective ultramafic rocks of the Mertavaara formation.

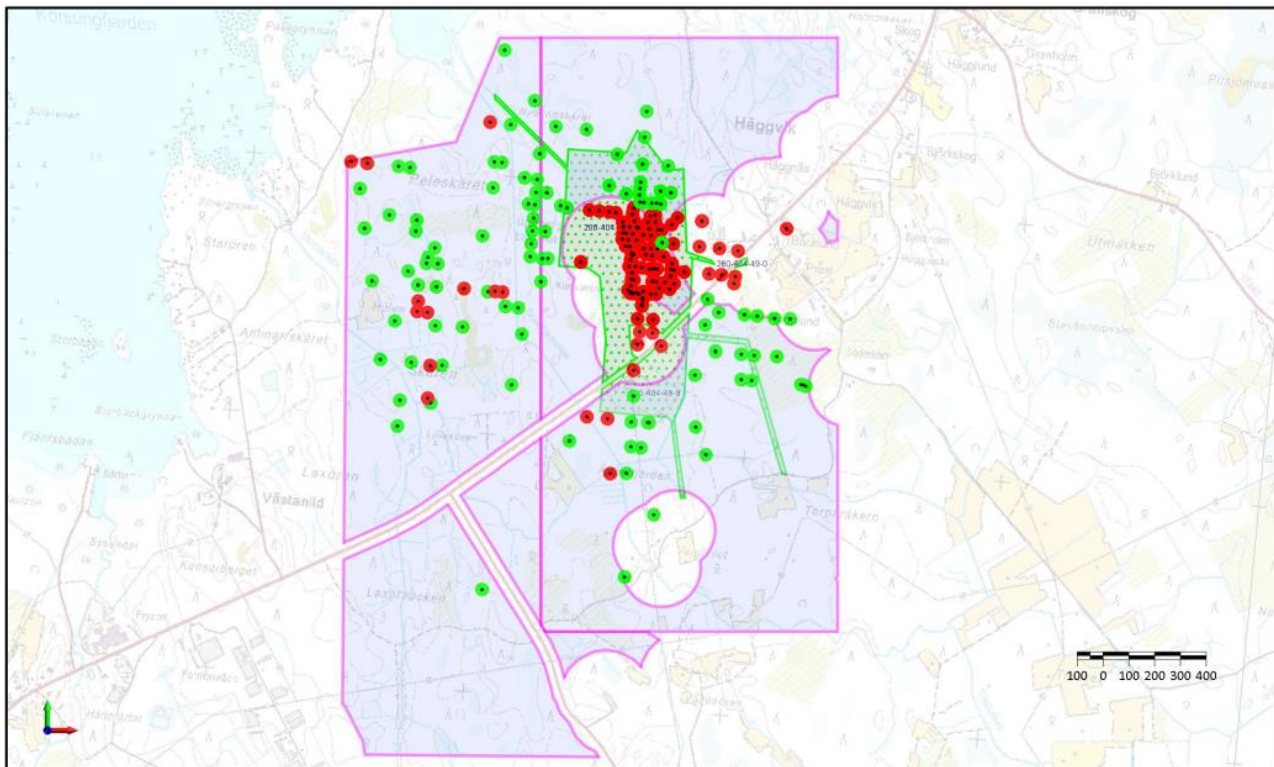
The company further advised that 28 drill holes for a total of 15032m have been drilled at Pulju to date, with the drill rig being demobilized on September 28th. Drilling is scheduled to resume in January next year.



Map showing the newly granted Holtinvaara exploration license within the Pulju project (Source: www.nordicnickel.com)

Industry News

Prospech Limited advised it reached an agreement with the Korsnäs Municipality to conduct exploration in the area of the historic Korsnäs lead mine. The agreement is based on a five-year term with a five-year extension option and grants the company consent and exclusive access to explore the area around the historic mine by paying the same exploration fees as stipulated in the Mining Act of Finland.



Korsnäs exploration license (purple) and area covered by Korsnäs Municipality agreement (green) (Source: www.prospech.com.au)

On a further note, **Greenland Resources** signed a letter of intent with Outokumpu for the supply of molybdenum from its Malmbjerg project, **Sibanye Stillwater** approved the next phase of development of the Keliber lithium project, **Amaroq Minerals** signed a contract mining agreement as well as a procurement and supply chain support agreement, **Kaunis Iron** advised that the land and environmental court granted leave to appeal Kaunis Iron's new environmental permit, **European Green Metals** announced it became a member of Svemin, Sweden's association for mines, minerals, and metal producers.