

From the industry for the industry

To every geologist, rock enthusiast & explorer

Made possible by

Gold sponsors



SveMin



Silver sponsors



KATI



MSALABS



BOLIDEN



NORSE™
DIAMOND DRILLING

Bronze sponsors



Xploration
P R O D U C T S



GeoVista

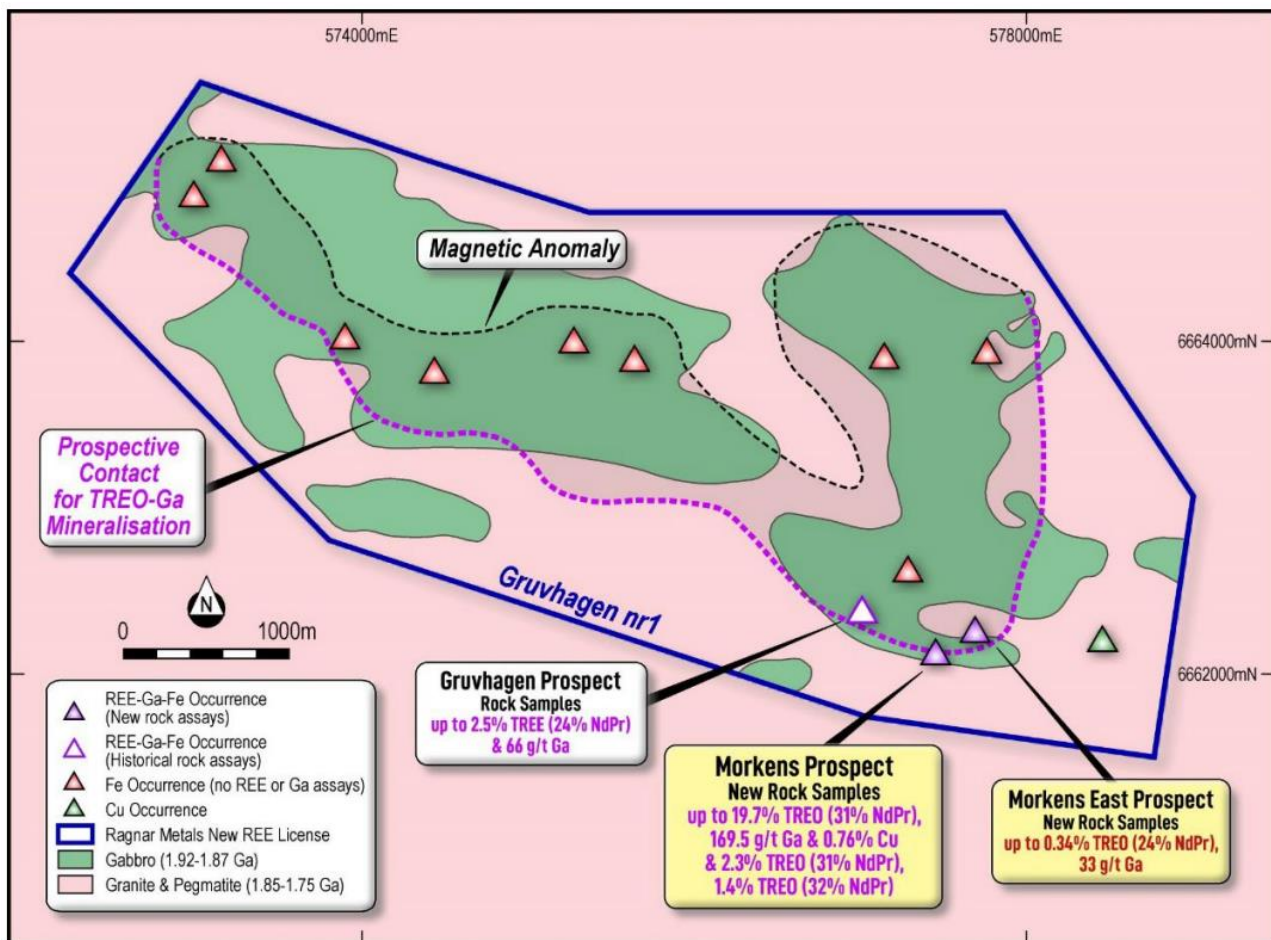
radai

SGU Sveriges
geologiska
undersökning

LOVISAGRUVAN

Industry News

Ragnar Metals reported high-grade REE and gallium rock chip sampling results from its Gruvhagen prospect in central Sweden. An initial field reconnaissance program at the newly acquired prospect returned REE-gallium mineralization with values up to 19.7% TREO (31%NdPr), 169g/t Ga, 0.8% Cu, and 490ppm cobalt. The REE-Gallium mineralization has been identified over 700m along the highly prospective, southern contact of a 7km long magnetic anomaly.

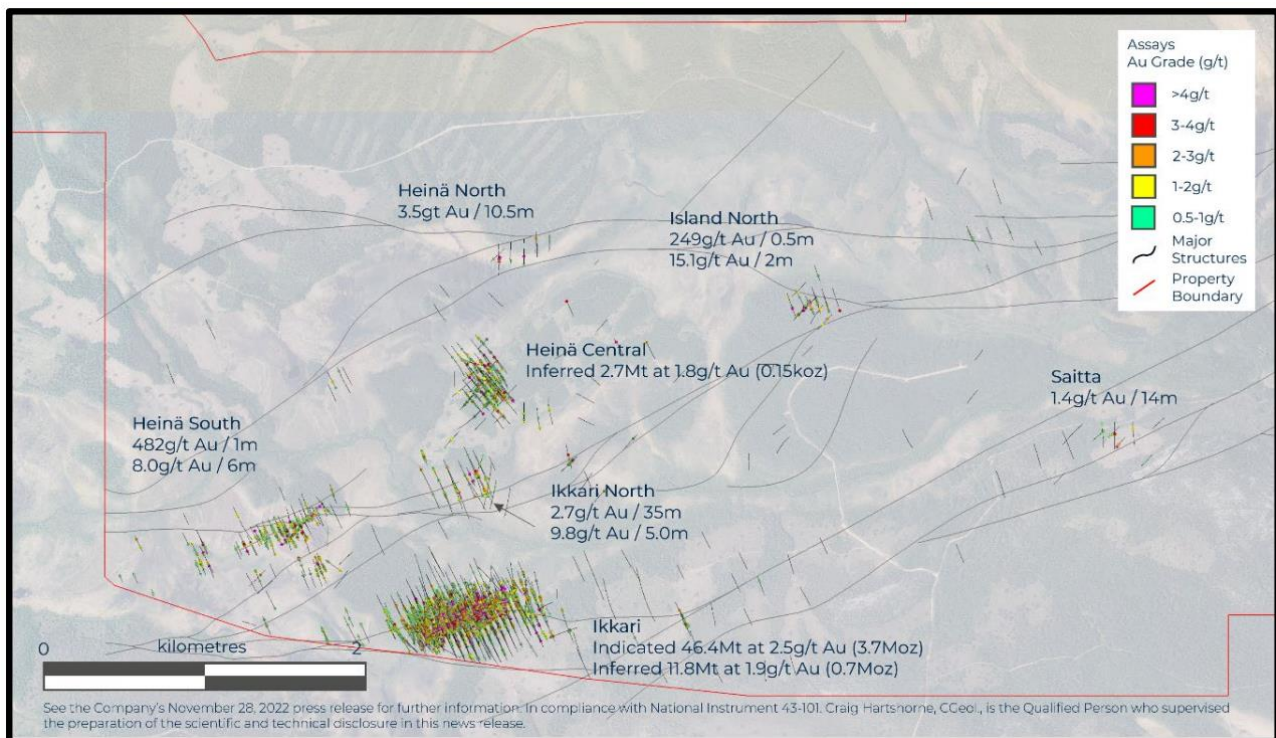


Gruvhagen prospect with interpreted geology highlighted airborne magnetic anomaly and highlighted rock chip samples (Source: www.ragnarmetals.com.au)

Industry News

Rupert Resources published new drilling results from Ikkari and Ikkari North. At Ikkari, infill drilling continued to intersect high-grade gold mineralization e.g., 4.2g/t Au over 72m in drill hole #123027. At Ikkari North, drilling successfully extended breccia-hosted gold-pyrite mineralization 200m to the east, returning e.g., 2.7g/t Au over 35.1m in drill hole #123059. Notably, the Ikkari North prospect represents the first discovery in Area 1 that was not identified by base of till sampling but geophysics.

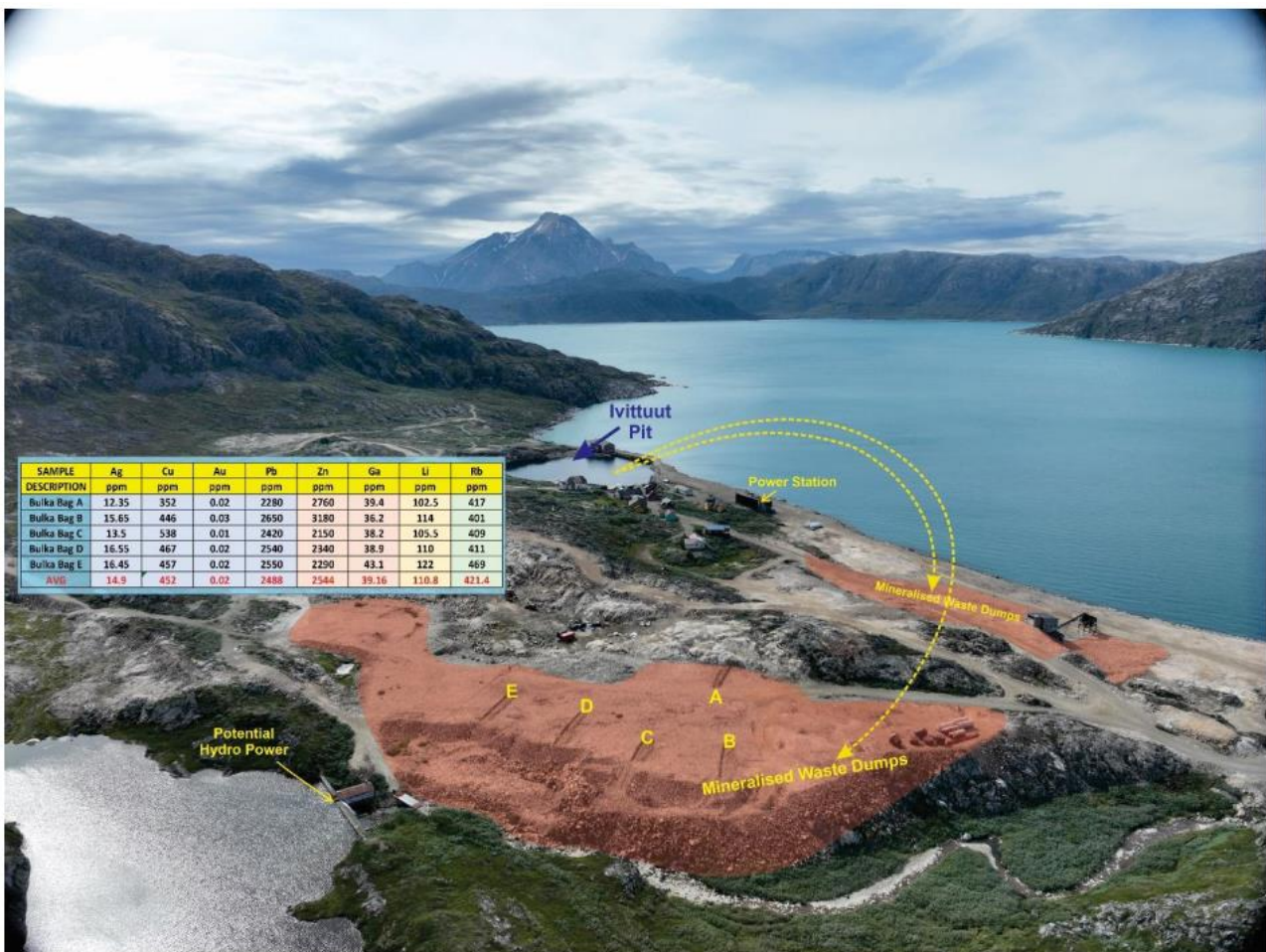
Following the completion of infill drilling needed for an updated resource estimate and a subsequent pre-feasibility study, the company now commenced its 2023/2024 drilling program with a strong focus on exploration.



“Overview of relative locations of Ikkari and Ikkari North (plan view)” (Source: www.rupertresources.com)

Industry News

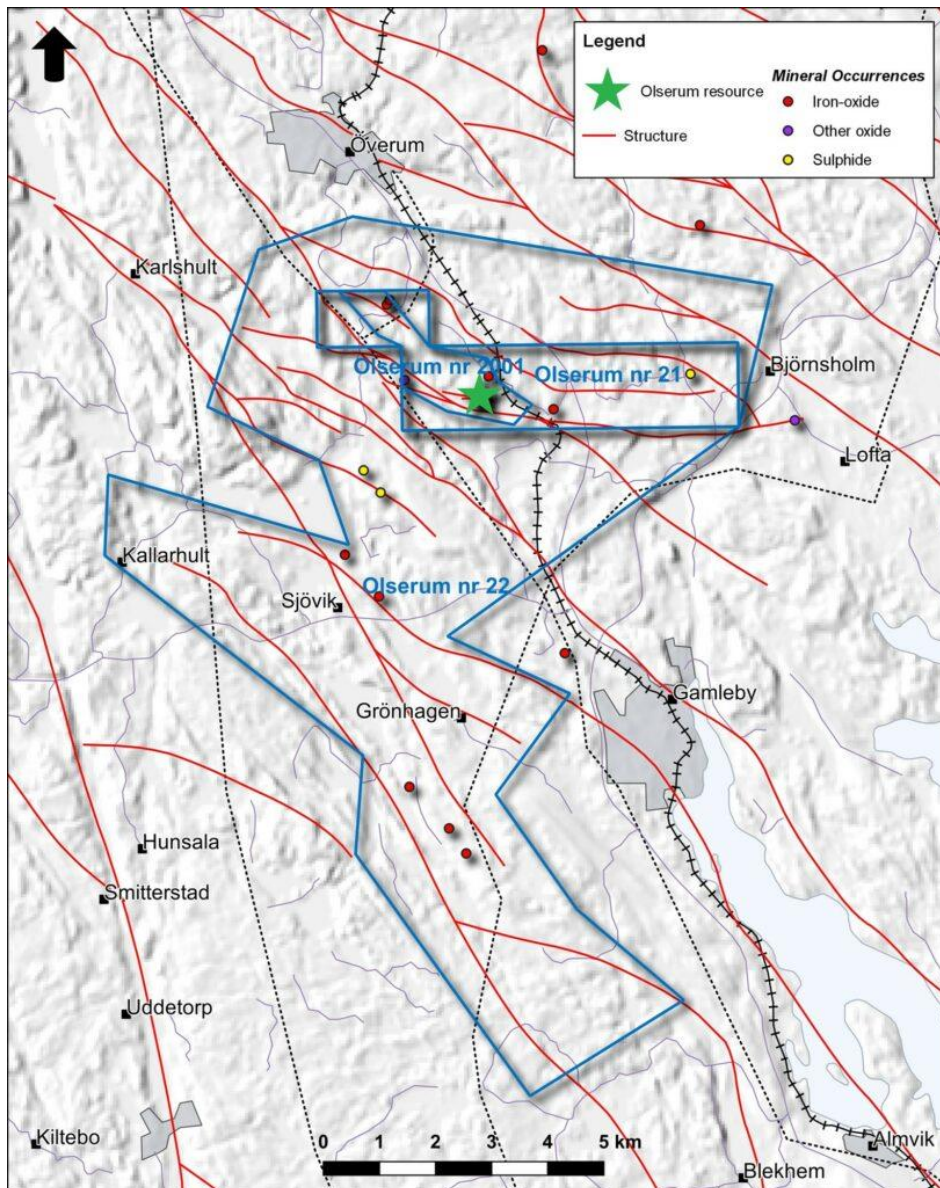
Eclipse Metals reported bulk sample results from waste rock from the historic Ivigtut cryolite mine. The company is currently conducting metallurgical test work to identify processes to produce a salable product from the mineralized waste material. The volume of the waste rock is estimated to be approx. three million tons, with the company now considering a ground-penetrating radar survey to better determine the overall volume of the mineralized material.



Graphic showing the historic Ivigtut pit, waste dumps, and sampled trenches (Source: www.eclipsemetals.com.au)

Industry News

European Green Metals announced a 10-fold expansion of its landholdings surrounding the Olserum REE deposit in southern Sweden. The company is currently finalizing an exploration plan to investigate several magnetite occurrences and newly identified anomalies within the new license area as REE mineralization in the Olserum district is known to have a close association with magnetite.



Olserum exploration permits (Source: www.europeangreenmetals.com)

Industry News

On a further note, [Bluelake Mineral](#) updated on the zoning plan permitting process for the proposed Joma mine, [Kuniko](#) announced the appointment of Mona Schanche as Chief Operating Officer, [Copperstone Resources](#) announced the resignation of Henrik Ager as CEO, [Beowulf Mining](#) announced that Ulla Sandborgh is stepping down from her position as CEO of Jokkmokk Iron Mines AB, [Aurion Resources](#) announced it has given Dragon Mining Ltd. notice to exercise the option to acquire and eliminate all encumbrances on the Kutuvuoma and Silasselkä properties and [New Peak Metals](#) entered into an agreement with UAE head quartered ENEXD Group to explore its Finnish gold projects.