

From the industry for the industry

To every geologist, rock enthusiast & explorer

Made possible by

Gold sponsors



SveMin



Silver sponsors



KATI



MSALABS

BOLIDEN

BERGTEAMET



Bronze sponsors



Xploration
PRODUCTS



radai

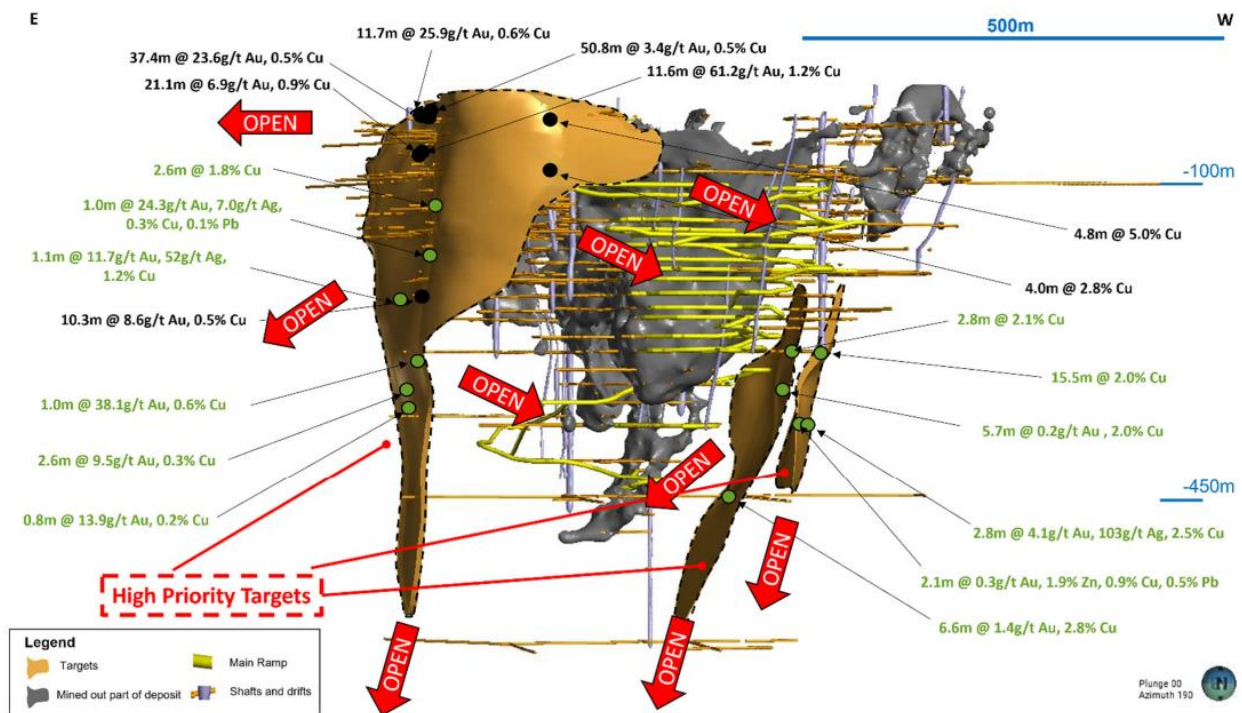
SGU Sveriges
geologiska
undersökning



LOVISAGRUVAN

Industry News

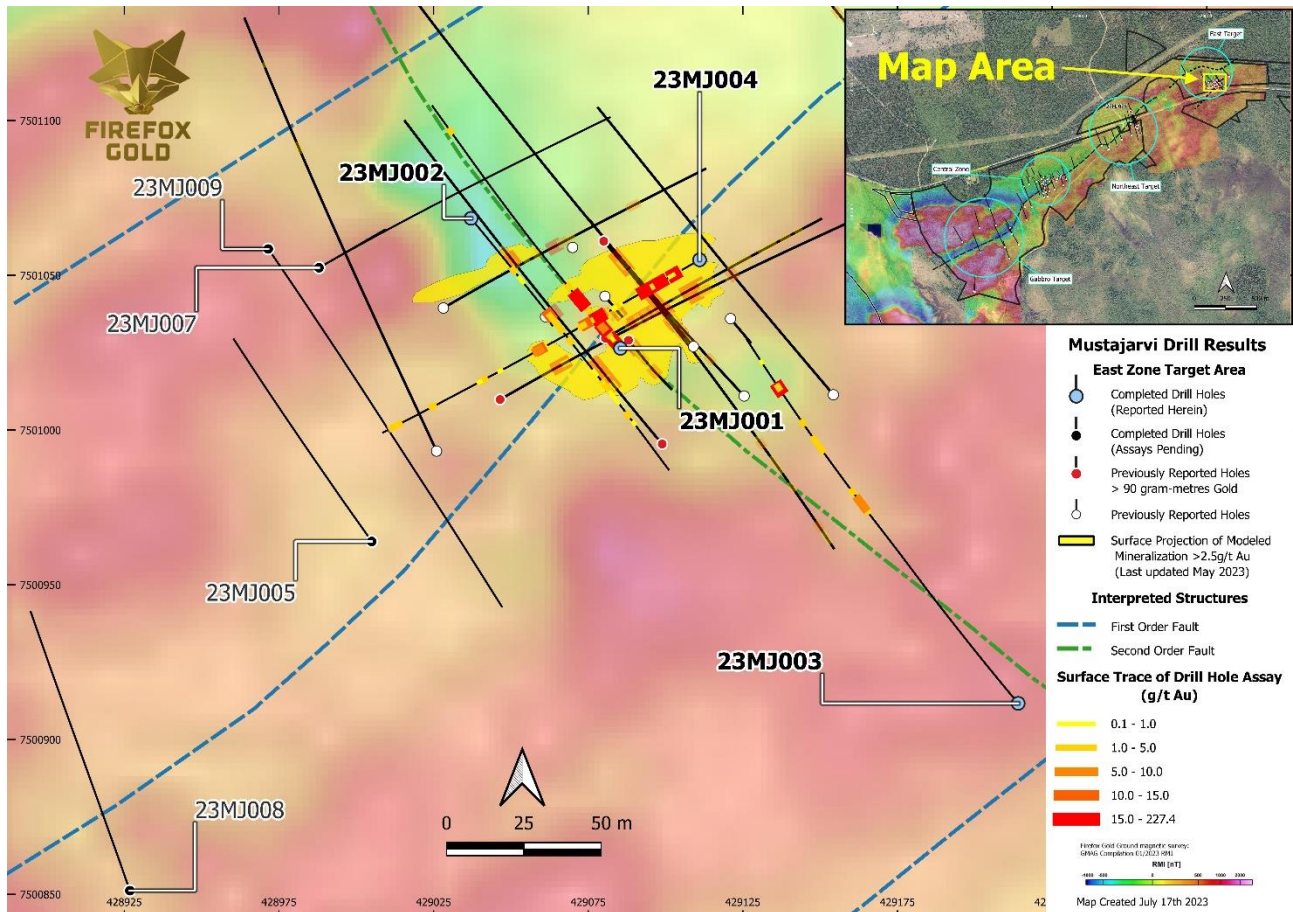
Alicanto Minerals reported the identification of multiple brownfield targets around the historic Falun mine following 3D modeling and the review of historic drill core. Newly compiled, previously unreleased historic intersections include e.g., 15.5m @ 2.0% Cu or 7.7m @ 8.2% Zn, 1.6% Pb, 0.2% Cu, 0.6g/t Ag. The company is advancing these near-mine targets together with additional high-priority targets along a 3.5km long mineralized trend for drill testing later in 2023.



High-priority copper-gold targets around the historic Falun mine. Newly released intersections in green, previously released intersections in black (Source: www.alicantominerals.com.au)

Industry News

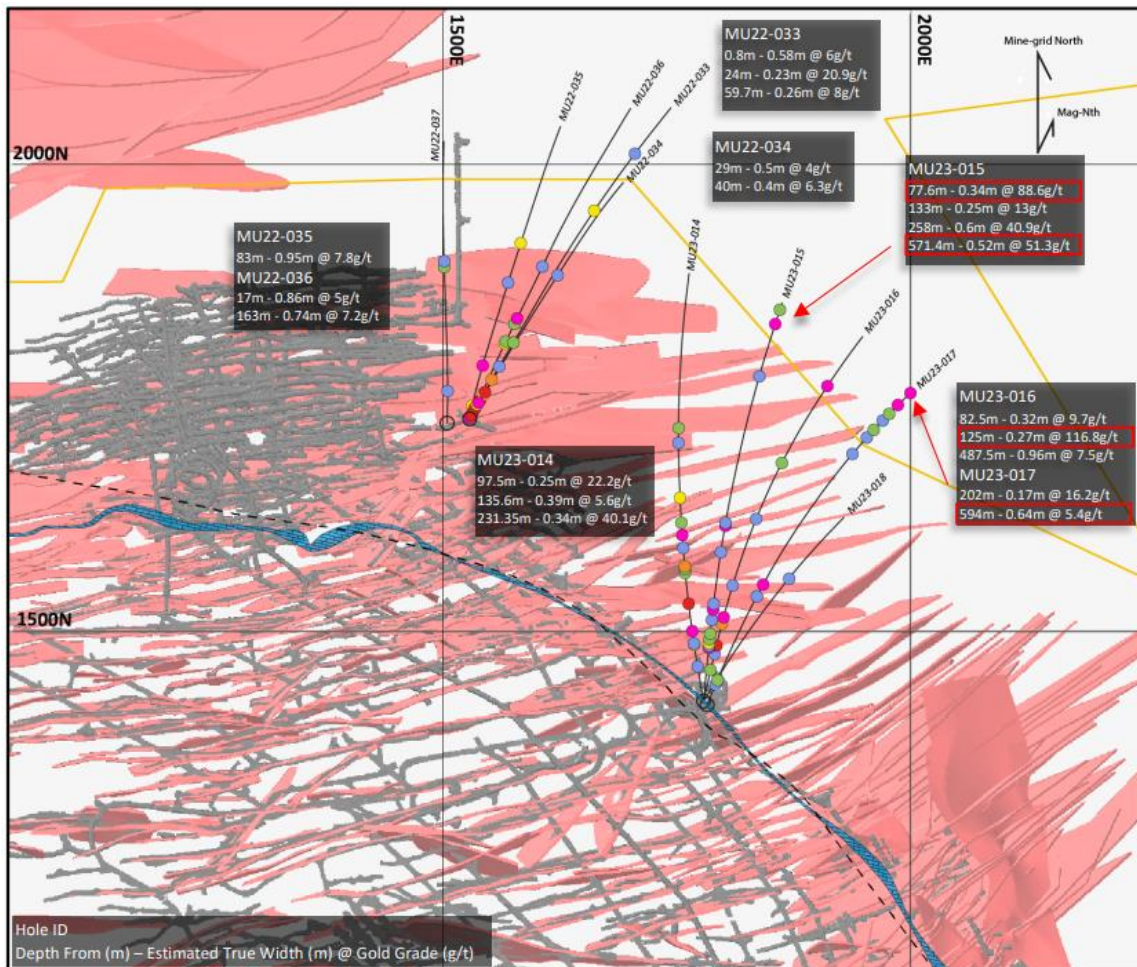
Firefox Gold reported assay results from four drill holes of its spring 2023 diamond drilling campaign at the Mustajärvi East Target. All four holes intersected high-grade gold mineralization with the best intersections returning 11.95m @ 9.69g/t Au in drill hole 23MJ001 and 20.45m @ 5.14g/t Au in drill hole 23MJ004. In addition to filling gaps in the center of the East Target, the holes further confirmed the expansion of the mineralized system to the south. The company notes that results from four additional holes are pending and a trenching program has Mustajärvi East has commenced.



Mustajärvi East Target with recent drilling (Source: www.firefoxgold.com)

Industry News

Mandalay Resources reported results from the Eastern Extension and North Zone exploration drilling programs at Björkdal. Best intercepts include e.g. 116.8g/t Au over 0.35m and 51.3g/t Au over 0.65m in the Lake Zone Extension (MU23-016, MU23-015) and 207g/t Au over 0.55m and 72.8g/t Au over 0.45m in the North Zone (MU22-040, MU22-025). Drilling further highlighted a new zone (Boreal Zone) between the Aurora and North Zones.



**Eastern Plunge
June 2023**

Workings and Geology

- Development
- Modeled Veining
- Björkdal Shear -400RL
- Concession Boundary
- Marble at -400RL

Drilling Results Showing Gold (g/t)

- Drill Trace
- Hole ID
- > 5
- 2.5 - 5
- 2.0 - 2.5
- 1.5 - 2
- 1 - 1.5
- 0.5 - 1

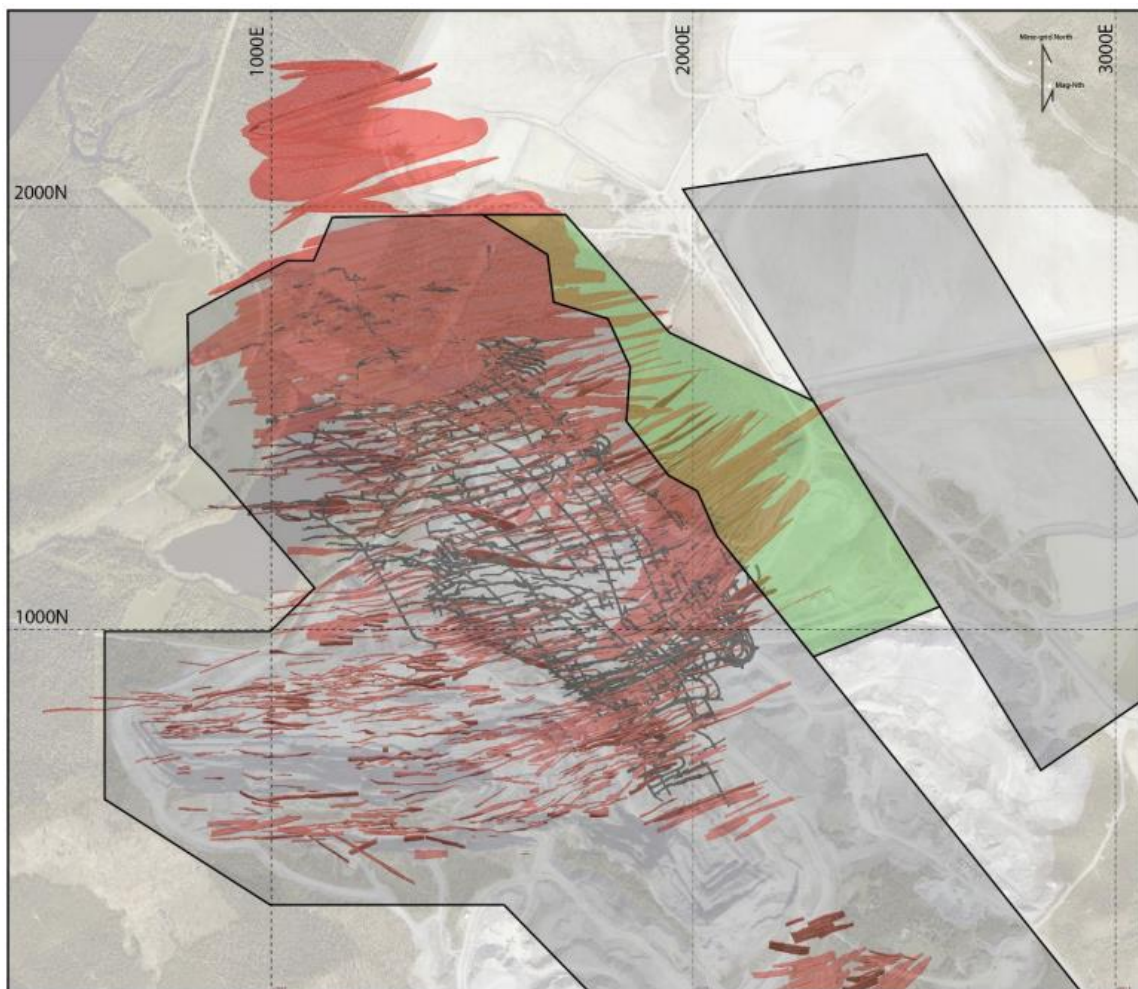
Note 1: Coloured grade ranges are diluted to 1m. No dilution is applied where vein true width is greater than 1m

Plan section of Lake Zone and Sub Aurora drilling (Source: www.mandalayresources.com)

This letter/article reflects the personal views and opinion of Vision Media Scandinavia AB and none of its content should be considered investment advice. While the information presented in this letter/article is believed to be accurate and reliable, it is not guaranteed by any means to be so. The presented information may be incomplete or out of date. No legal responsibility or obligation is taken to provide future updates. Neither Vision Media Scandinavia AB, nor anyone else, accepts any responsibility, or assumes any liability, for any direct, indirect or consequential loss arising from the use of the information in this letter/article.

Industry News

Mandalay Resources announced it received the mining concession permit for the Eastern Extension Zone at its Björkdal operation. The new permit will allow the company to extend the mining envelope by 350m.



**Mining Concession
Map July 2023**

Ledgend

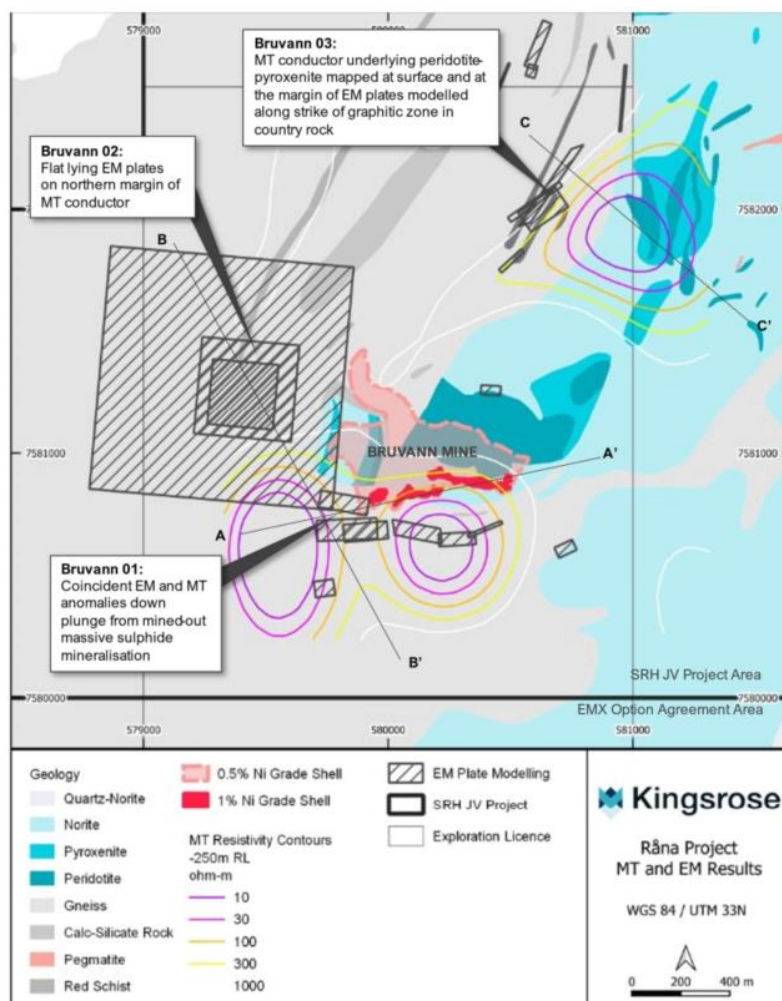
- Development
- Modeled Veining
- Existing Mining Concessions
- New Mining Concession

Björkdal Mining Concession Map (Source: www.mandalayresources.com)

Industry News

Kingsrose Mining published results from ground-based electromagnetic and magnetotelluric geophysical surveys at the Brevann Mine area. The surveys resulted in the identification of several conductive bodies immediately south, west and down plunge and one km to the northeast of the Brevann Mine. Drill testing of the conductive bodies is already underway.

In addition, the company awaits results from a recently completed ground-based MT survey at the Rånbogen prospect as well as from a mobile MT survey covering the entire Råna intrusive complex.



High-priority exploration targets at the Brevann Mine area (Source: www.kingsrosemining.com)

Industry News

On a further note, [Talga Group](#) announced it secured a 10-ha land parcel for the construction of its natural graphite anode production plant in Luleå, Sweden, [Energy Transition Metals](#) updated on the arbitration proceedings concerning the Kvanefjeld project, [Beowulf Mining](#) reported preliminary economic results for the development of a Graphite Anode Materials Plant, [Grangex](#) advised that the environmental permit for Dannemora has gained legal force, [Karelian Diamond Resources](#) announced the commencement of an exploration program to test numerous kimberlite targets up ice of a previously discovered green diamond, [Dragon Mining](#) provided an exploration update for its projects in southern Finland and [Kuniko](#) reported additional assay results from drilling at Middagshvile.