

From the industry for the industry

To every geologist, rock enthusiast & explorer

Made possible by

Gold sponsors



SveMin



Silver sponsors



KATI



MSALABS

BOLIDEN

BERGTEAMET



Bronze sponsors



Xploration
PRODUCTS



radai

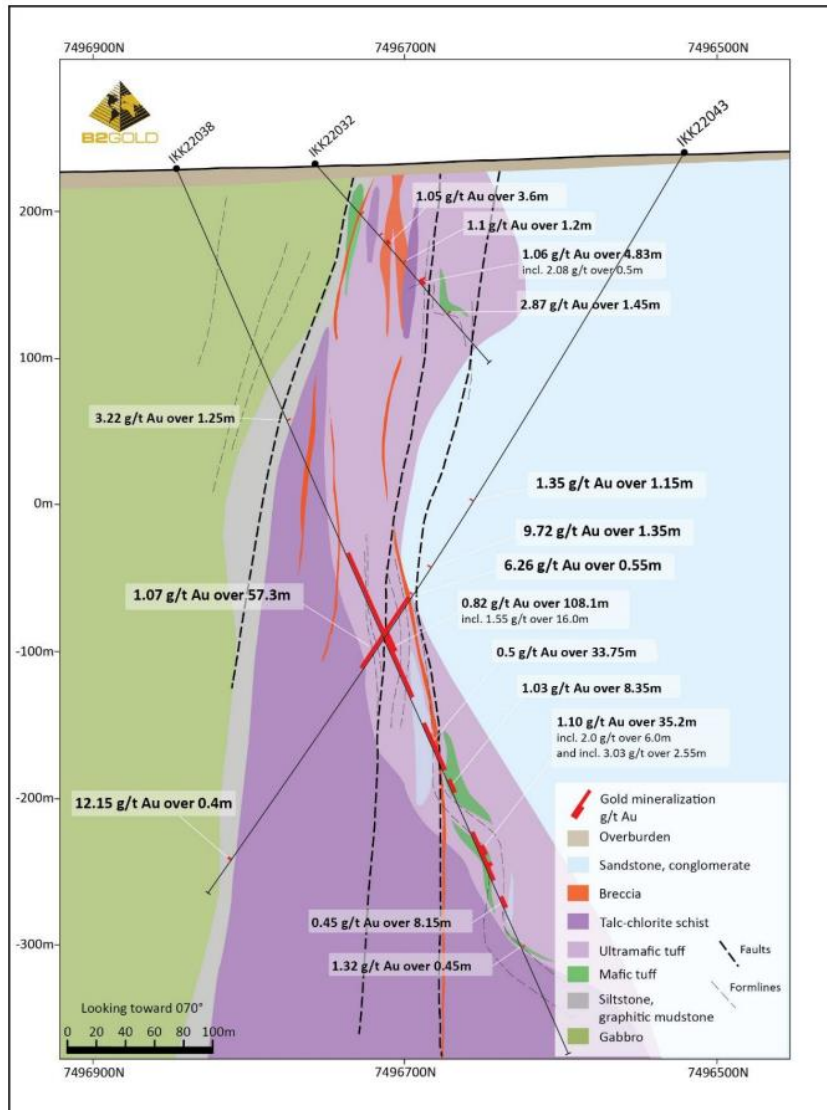
SGU Sveriges
geologiska
undersökning



LOVISAGRUVAN

Industry News

Aurion Resources reported more drill results from its B2 JV project, including the intersection of deep mineralization at the Helmi prospect. Amongst other intervals, drill hole IKK22043 intersected 57.3m @ 1.07g/t Au from 360.8m, confirming the Helmi depth extension and providing important information regarding the geometry of the mineralization. In addition, drill hole KUE 22035 intersected multiple intervals of gold mineralization in a 250m step out to previous intersections along the Helmi-Kutuvuoma trend. For 2023, the JV plans to drill a minimum of 10500m.

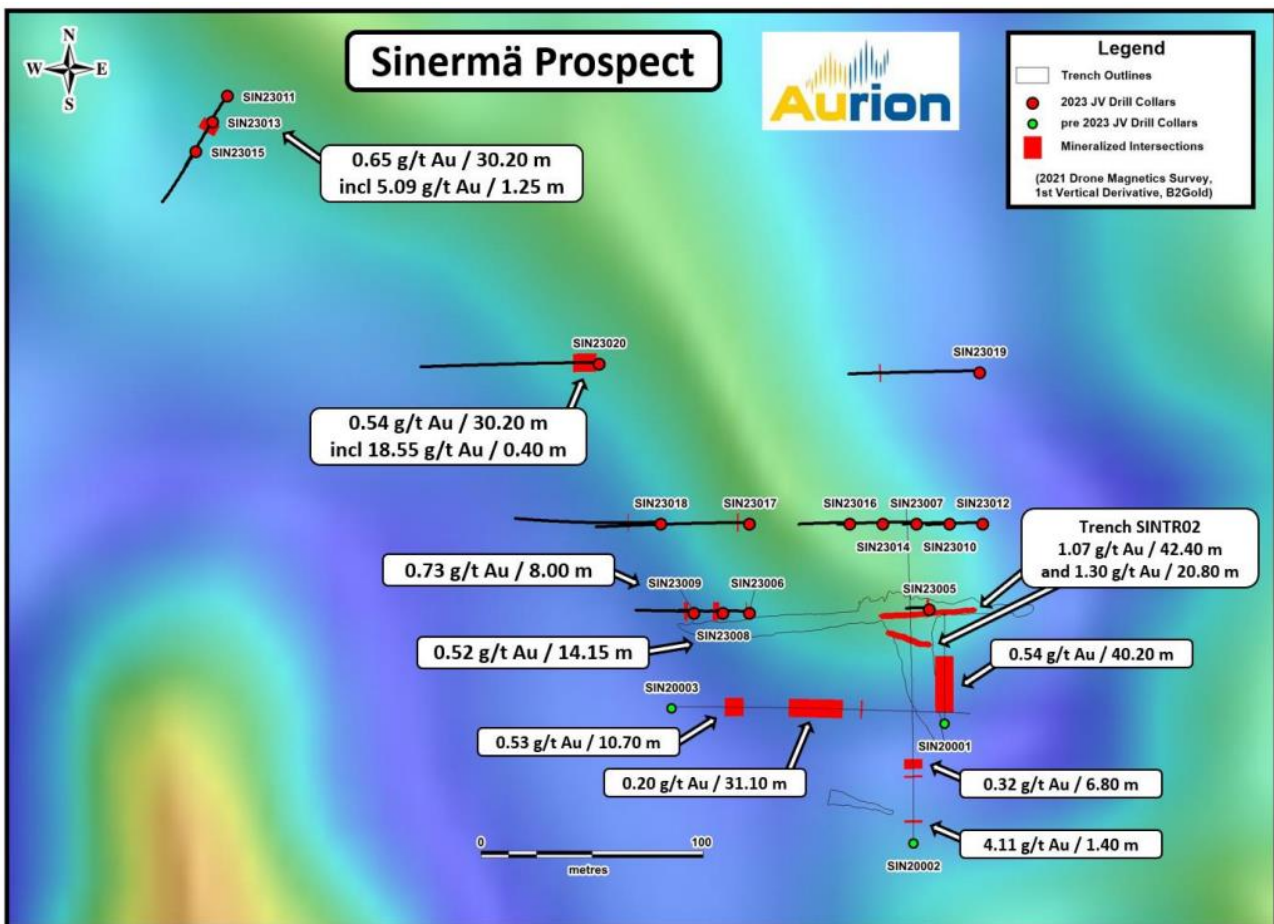


Cross Section, highlighting holes IKK22043 and IKK22038 (Source: www.aurionresources.com)

This letter/article reflects the personal views and opinion of Vision Media Scandinavia AB and none of its content should be considered investment advice. While the information presented in this letter/article is believed to be accurate and reliable, it is not guaranteed by any means to be so. The presented information may be incomplete or out of date. No legal responsibility or obligation is taken to provide future updates. Neither Vision Media Scandinavia AB, nor anyone else, accepts any responsibility, or assumes any liability, for any direct, indirect or consequential loss arising from the use of the information in this letter/article.

Industry News

Aurion Resources further reported the intersection of gold mineralization in multiple drill holes at the Sinermä prospect, also advanced together with JV partner B2 Gold. Drilling intersected shallow gold mineralization over approx. 450m strike length, returning e.g. 30.2m @ 0.65g/t Au (SIN23013) or 30.2m @ 0.54 g/t Au in drill hole SIN23020. The mineralization was originally discovered in 2020 by following up on previously identified geochemical and geophysical anomalies.



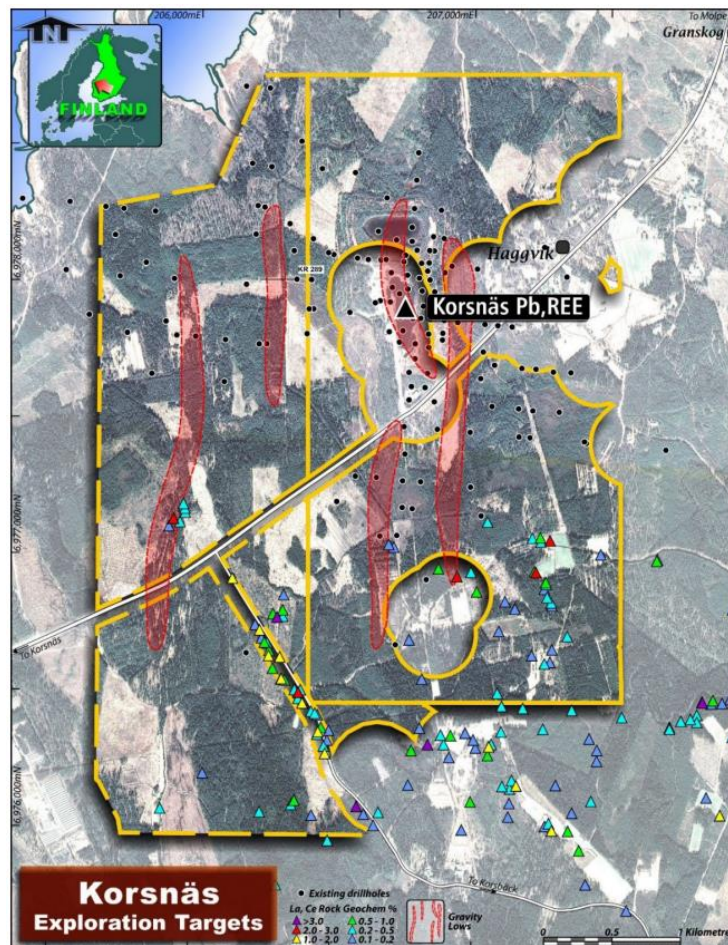
Sinermä prospect drill hole map on aeromagnetic background (Source: www.aurionresources.com)

Industry News

Prospech Limited reported on initial investigation of historic drill core from the Korsnäs project. Inspection of the drill core revealed that historic sampling strongly focused on core with visible lead mineralization but overlooked zones of the potentially REE mineralized carbonatite. Following, Prospech's geologists collected 65 core samples from the previously unsampled, prospective carbonatite.

Notably, the former Korsnäs lead mine left behind a tailings storage facility that is currently being investigated by the company as historic records indicate that rare-earth concentrates were not produced during the initial years of mine production.

Digitization of historical gravity data further revealed several linear gravity lows that show similar characteristics to the Korsnäs mineralization and thus represent favorable exploration targets.



Korsnäs project location and exploration map (Source: www.prospech.com.au)

Industry News

On a further Note, [Gungnir Resources](#) announced the resumption of drilling activities at its Lappvattnet Nickel project, [Talga Group](#) provided an update concerning the Vittangi Anode Project permitting process, [Eclipse Metals](#) announced that samples from its Ivigtut exploration program have been delivered to the laboratory in Perth, [Avrupa Minerals](#) received approval for the Kangansjärvi and Kolima exploration license applications, [Sibanye Stillwater](#) celebrated the foundation stone laying of the Keliber Lithium Refinery, [Greenland Resources](#) signed a MoU with binding terms with Molymet, [Latitude 66 Cobalt](#) filed 134.77 km² of exploration permit applications and [Bluelake Minerals](#) advised that Roysvik municipality decided to send the Joma mine zoning plan for a new consultation and public review.